

# CITIZEN

## **Windows POS Print SDK**

### **Programming Manual**

**For Ver. 1.06**

**CITIZEN SYSTEMS JAPAN CO., LTD.**

## Revision Record

Date	Version	Description
2015/11/30	1.00	New issue.
2016/03/14	1.01	<ul style="list-style-type: none"> <li>- Added CMP-20/30 to the support models.</li> <li>- Added the explanation of the program structure.</li> <li>- Modified the description in the Connect method, the Disconnect method and the PrinterCheck method.</li> <li>- Added the explanation of the log function.</li> </ul>
2016/09/27	1.02	<ul style="list-style-type: none"> <li>- Added the Bluetooth to the connect type of the Connect method, the SearchCitizenPrinter method, the SearchESCPOSPrinter method and the PrinterCheckEx method.</li> <li>- Added the PrintPaddingText method.</li> </ul>
2016/12/05	1.03	- Added the SetIPSettings method.
2016/12/22	1.04	<ul style="list-style-type: none"> <li>- Added CT-D150/CT-E351 to the support models. (page 7,8,9,10)</li> <li>- Modified the description in the OpenDrawer method. (page 48)</li> <li>- Added the OpenDrawerEx method. (page 66)</li> </ul>
2017/03/03	1.05	- Added the predefined constants list. (page 77-79)
2017/05/08	1.06	- Added CT-D151/CT-E651 to the support models. (page 7,8,9,10)

## Caution

1. Unauthorized use of all or any part of this document is prohibited.
2. The information in this document is subject to change without prior notice.
3. This document has been created with full attention. If, however, you find an error or question, please contact us.
4. We shall not be liable for any effect resulting from operation regardless of the above item 3.
5. If you do not agree with the above terms, you are not permitted to use this Library.

## Trademark

Microsoft, Windows, Visual Studio, Visual Basic, Visual C#, and Visual C++ are registered trademarks of Microsoft Corporation in the United States and/or other countries. (Official name for Windows is Microsoft Windows Operating System.)

Company names and product names appearing on this document are trademarks and/or registered trademarks of respective companies.

# Table of Contents

<b>1. Introduction</b>	<b>6</b>
1.1. Document target range	6
1.2. System summary	6
1.3. Printer setting	10
1.4. Definition method	17
1.5. Program structure	19
1.6. Functions list	20
<b>2. Library interfaces</b>	<b>22</b>
2.1. Return value	22
2.2. Constructor	23
2.3. Connect method	24
2.4. Disconnect method	26
2.5. SetCommProperties method	27
2.6. SetEncoding method	28
2.7. PrinterCheck method	29
2.8. Status method	30
2.9. PrintText method	32
2.10. PrintPaddingText method	33
2.11. PrintTextPCFont method	35
2.12. PrintBitmap method	36
2.13. SetNVBitmap method	38
2.14. PrintNVBitmap method	40
2.15. PrintBarCode method	41
2.16. PrintPDF417 method	43
2.17. PrintQRCode method	44
2.18. PrintGS1DataBarStacked method	45
2.19. CutPaper method	46
2.20. UnitFeed method	47
2.21. MarkFeed method	48
2.22. OpenDrawer method	49
2.23. TransactionPrint method	50
2.24. RotatePrint method	51
2.25. PageModePrint method	52
2.26. ClearPrintArea method	54
2.27. ClearOutput method	55
2.28. PrintData method	56
2.29. PrintNormal method	57
2.30. GetVersionCode method	58
2.31. GetVersionName method	59
2.32. WatermarkPrint method	60
2.33. SearchCitizenPrinter method	61
2.34. SearchESCPOSPrinter method	63
2.35. SetIPSettings method	64
2.36. PrinterCheckEx method	65
2.37. OpenDrawerEx method	67
2.38. SetLog method	68
2.39. PageModeArea property	69
2.40. PageModePrintArea property	70

2.41. PageModePrintDirection property.....	71
2.42. PageModeHorizontalPosition property.....	72
2.43. PageModeVerticalPosition property.....	73
2.44. RecLineSpacing property.....	74
2.45. MapMode property.....	75
<b>3. Notes.....</b>	<b>76</b>
3.1. Function to detect the completion of printing .....	76
3.2. Log function.....	76
3.3. Predefined Constants List.....	78

# 1. Introduction

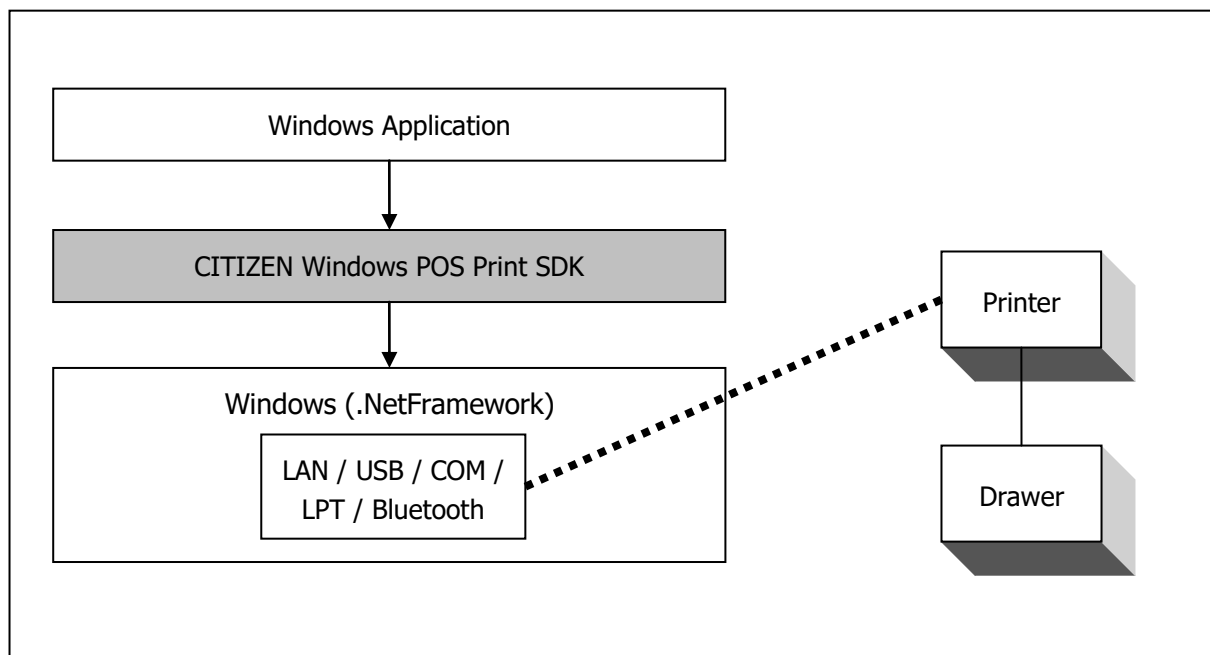
This document is a programming manual for the CITIZEN Windows POS Print SDK.

## 1.1. Document target range

This document is intended for developers who integrate their Windows application programs with CITIZEN POS printers.

## 1.2. System summary

This SDK is referred by Windows application program to control CITIZEN POS printers.



**System diagram of the SDK**

### **SDK files**

This SDK is structured by the following three files. All of them must be stored in the same folder as the application program.

- CSJPOSLib.dll : Main library file
- CSJPOSLibW32.dll : Extended library for 32bit processor (Reference by CSJPOSLib.dll)
- CSJPOSLibW64.dll : Extended library for 64bit processor (Reference by CSJPOSLib.dll)

### **Supported operating systems**

This SDK supports the following Microsoft Windows operating systems.

- Windows XP
- Windows 7 (32bit, 64bit)
- Windows 8 (32bit, 64bit)
- Windows 8.1 (32bit, 64bit)
- Windows 10 (32bit, 64bit)

## **Supported .Net Framework**

This SDK supports the following Microsoft .NET Framework.

- Microsoft .NET Framework 2.0 SP2
- Microsoft .NET Framework 3.5 SP1
- Microsoft .NET Framework 4.0
- Microsoft .NET Framework 4.5
- Microsoft .NET Framework 4.6

## **Supported printer models**

The models supported by this SDK and the corresponding interfaces are as listed below.

Refer to the user's manual of the printer for the detailed functions of each model.

<b>Series of Model</b>	<b>Object Model</b>	<b>Interface</b>	<b>Printer Functions</b>
CT-D150 Series	CT-D150	Wired LAN, USB, COM	Standard
CT-D151 Series	CT-D151	Wired/Wireless LAN, USB, COM, Bluetooth	Standard
CT-E351 Series	CT-E351	Wired LAN, USB, COM	Standard
CT-E651 Series	CT-E651	Wired/Wireless LAN, USB, COM, Bluetooth	Standard
CT-S251 Series	CT-S251	Wired/Wireless LAN, USB, COM, Bluetooth	Standard
CT-S281 Series	CT-S281/281BT/281BD	USB, COM, Bluetooth	Standard
	CT-S281-XL-M1	USB, COM	Blackmark paper is supported.
	CT-S281-XL		Label paper is supported.
CT-S310II Series	CT-S310II	Wired LAN, USB, COM	Standard
CT-S601/651/801/851 Series	CT-S601/651/801/851	Wired/Wireless LAN, USB, COM, LPT	Standard
	CT-S801/851-M		Blackmark paper is supported.
	CT-S801-L		Label paper is supported.
CT-S601II/651II/801II/851II Series	CT-S601II/651II/801II/851II	Wired/Wireless LAN, USB, COM, LPT, Bluetooth	Standard
	CT-S801II/851II-M		Blackmark paper is supported.
	CT-S801II-L		Label paper is supported.
CT-S2000 Series	CT-S2000	Wired LAN, USB, COM, LPT	Standard
	CT-S2000-M		Blackmark paper is supported.
	CT-S2000-L		Label paper is supported.
CT-S4000 Series	CT-S4000	Wired LAN, USB, COM, LPT	Standard (Paper with blackmark on front side is supported.)
	CT-S4000-M		Paper with blackmark on back side is supported.
	CT-S4000-L		Label paper is supported.
CMP-20/30/40/20II/30II Series	CMP-20/30/40/20II/30II (ESC/POS)	Wireless LAN, USB, COM, Bluetooth	Standard

**USB interface connection**

The Windows printer driver is required to be installed for the USB interface.

**Parallel interface connection**

The Windows printer driver is recommended to be installed for the parallel interface. Otherwise the driver installation wizard window pops up every time when the printer is connected and is powered on.

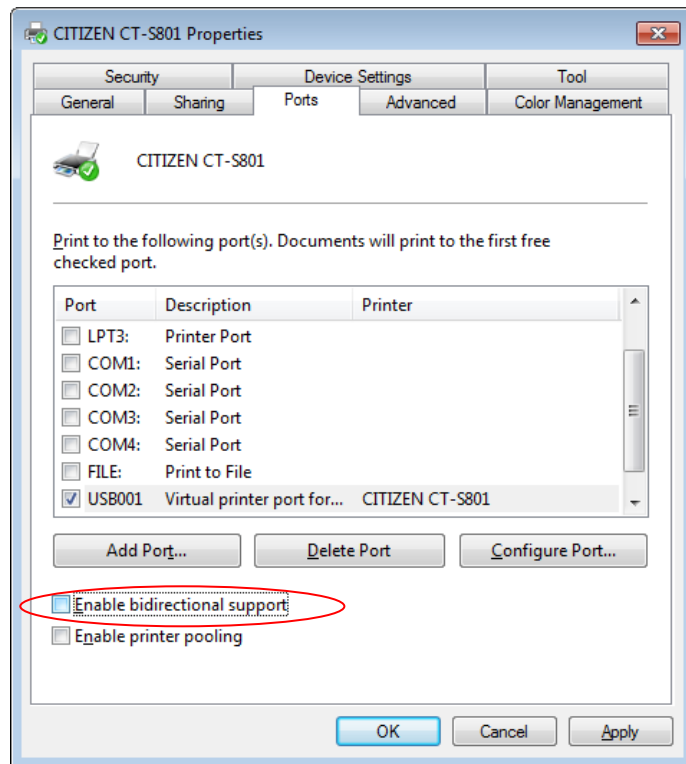
**Installation of the Windows driver**

The Windows drivers that support each model are as listed below. For the installation instruction of the Windows driver, refer to the "Windows Driver Guide" that is attached to the Windows driver.

Object Model	Windows Driver Name	Printer Function
CT-D150	CITIZEN CT-D150	Standard
CT-D151	CITIZEN CT-D151	Standard
CT-E351	CITIZEN CT-E351	Standard
CT-E651	CITIZEN CT-E651	Standard
CT-S251	CITIZEN CT-S251	Standard
CT-S281/281BT/281BD	CITIZEN CT-S281	Standard
CT-S281-XL-M1	CITIZEN CT-S281 Label	Blackmark paper is supported.
CT-S281-XL	CITIZEN CT-S281 Label	Label paper is supported.
CT-S310II	CITIZEN CT-S310II	Standard
CT-S601/651/801/851	CITIZEN CT-S601/651/801/851	Standard
CT-S801/851-M	CITIZEN CT-S801/851 Black Mark	Blackmark paper is supported.
CT-S801-L	CITIZEN CT-S801 Label	Label paper is supported.
CT-S601II/651II/801II/851II	CITIZEN CT-S601II/651II/801II/851II	Standard
CT-S801II/851II-M	CITIZEN CT-S801II/851II Black Mark	Blackmark paper is supported.
CT-S801II-L	CITIZEN CT-S801II Label	Label paper is supported.
CT-S2000	CITIZEN CT-S2000	Standard
CT-S2000-M	CITIZEN CT-S2000 Label	Blackmark paper is supported.
CT-S2000-L	CITIZEN CT-S2000 Label	Label paper is supported.
CT-S4000	CITIZEN CT-S4000	Standard (Paper with blackmark on front side is supported.)
CT-S4000-M	CITIZEN CT-S4000 Label	Paper with blackmark on back side is supported.
CT-S4000-L	CITIZEN CT-S4000 Label	Label paper is supported.
CMP-20/30/40/20II/30II	CITIZEN CMP-20/30/40/20II/30II	Standard

\* This driver cannot be used with the status function (language monitor) of the Windows driver that shows the printer status. When using this driver, **install the Windows driver without the status function, or uncheck the "Enable bidirectional support" option under the Ports setting of the Windows driver.** (Need to reboot the computer in order for the changes to take effect.)





### 1.3. Printer setting

It is the prerequisite for the use of this SDK that the memory switch of the printer are set as listed below.

#### CT-D150 Series Memory Switch Setting

MSW No.	Function	Setting	Description
1-1	Power ON Info	OFF	Enabled
1-2	Buffer Size	OFF	4KB
1-3	Busy condition	ON	Buffer full
1-4	Receive Error	OFF	Character?
1-5	CR mode	OFF	Disabled
1-7	DSR signal (when serial interface is used)	OFF	DSR
1-8	Init signal (when serial interface is used)	OFF	-
2-2	Auto cutter	ON	Enabled
2-4	Full Col Print	ON	Wait Data
3-1	Auto cutter	OFF	L/F enabled
3-7	CBM1000 Mode	ON	Compatible
3-8	Resume Open Err	OFF	Auto restore
4-8	Partial Only	OFF	Disabled
5-2	Line Pitch	OFF	360 dots
5-3	USB Mode	ON	Printer Class
6-1	Act. For Driver	ON	Valid
7-6	DMA control	Enable	-
9-1	Code page	Katakana (*1)	-
9-2	Int'Char Set	Japan (*1)	-
9-4	Multi-byte Char (*2)	Japanese: SJIS(CP932) Chinese: GB18030 Korean: EUC Hangul Taiwanese: BIG5	-

#### CT-D151 Series Memory Switch Setting

MSW No.	Function	Setting	Description
1-1	Power ON Info	OFF	Enabled
1-2	Buffer Size	OFF	4KB
1-3	Busy condition	ON	Buffer full
1-4	Receive Error	OFF	Character?
1-5	CR Mode	OFF	Disabled
1-7	DSR signal (when serial interface is used)	OFF	DSR
1-8	Init signal (when serial interface is used)	OFF	-
2-2	Auto cutter	ON	Enabled
2-4	Full Col Print	ON	Wait Data
3-1	Resume Ctrr Err	OFF	L/F enabled
3-7	CBM1000 Mode	ON	Compatible
3-8	Resume Open Err	OFF	Auto restore
4-8	Partial Only	OFF	Disabled
5-2	Line Pitch	OFF	360 dots
5-3	USB Mode	ON	Printer Class
6-1	Act. For Driver	ON	Valid
7-6	DMA control	Enable	-

MSW No.	Function	Setting	Description
9-1	Code Page	Katakana (*1)	-
9-2	Int'Char Set	Japan (*1)	-
9-4	Multi-byte Char (*2)	Japanese: SJIS(CP932) Chinese: GB18030 Korean: EUC Hangul Taiwanese: BIG5	-
13-1	Security/Target	Low/All	-
13-5	BT Device Scan	Discoverable	-
13-6	Auto Reconnect (When Bluetooth I/F is used)	Invalid	-

### CT-E351 Series Memory Switch Setting

MSW No.	Function	Setting	Description
1-1	Power ON Info	OFF	Enabled
1-2	Buffer Size	OFF	4KB
1-3	Busy condition	ON	Buffer full
1-4	Receiving Error	OFF	Character?
1-5	CR mode	OFF	Disabled
1-7	DSR signal (when serial interface is used)	OFF	DSR
1-8	Init signal (when serial interface is used)	OFF	-
2-2	Auto cutter	ON	Enabled
2-4	Full Col Print	ON	Wait Data
3-1	Auto cutter	OFF	L/F enabled
3-7	CBM1000 Mode	ON	Compatible
3-8	Resume Open Err	OFF	Auto restore
4-8	Partial Only	OFF	Disabled
5-2	Line Pitch	OFF	360 dots
5-3	USB Mode	ON	Printer Class
6-1	Act. For Driver	ON	Valid
7-6	DMA control	Enable	-
9-1	Code page	Katakana (*1)	-
9-2	Int'Char Set	Japan (*1)	-
9-4	Multi-byte Char (*2)	Japanese: SJIS(CP932) Chinese: GB18030 Korean: EUC Hangul Taiwanese: BIG5	-

### CT-E651 Series Memory Switch Setting

MSW No.	Function	Setting	Description
1-1	Power ON Info	OFF	Enabled
1-2	Buffer Size	OFF	4KB
1-3	Busy condition	ON	Buffer full
1-4	Receiving Error	OFF	Character?
1-5	CR Mode	OFF	Disabled
1-7	DSR signal (when serial interface is used)	OFF	DSR
1-8	Init signal (when serial interface is used)	OFF	-
2-2	Auto cutter	ON	Enabled
2-4	Full Col Print	ON	Wait Data
3-1	Resume Ctrr Err	OFF	L/F enabled

MSW No.	Function	Setting	Description
3-7	CBM1000 Mode	ON	Compatible
3-8	Resume Open Err	OFF	Auto restore
4-8	Partial Only	OFF	Disabled
5-2	Line Pitch	OFF	360 dots
5-3	USB Mode	ON	Printer Class
6-1	Act. For Driver	ON	Valid
7-6	DMA control	Enable	-
9-1	Code Page	Katakana (*1)	-
9-2	Int'Char Set	Japan (*1)	-
9-4	Multi-byte Char (*2)	Japanese: SJIS(CP932) Chinese: GB18030 Korean: EUC Hangul Taiwanese: BIG5	-
13-1	Security/Target	Low/All	-
13-5	BT Device Scan	Discoverable	-
13-6	Auto Reconnect (When Bluetooth I/F is used)	Invalid	-

**CT-S251 Series Memory Switch Setting**

MSW No.	Function	Setting	Description
1-1	Power ON notify setting	OFF	Enabled
1-2	Input buffer	OFF	4KB
1-3	Busy condition	ON	Buffer full
1-4	Receiving error character	OFF	Character?
1-5	CR mode	OFF	Disabled
1-7	Select DSR signal (when serial interface is used)	OFF	DSR
1-8	Select INIT signal (when serial interface is used)	OFF	-
2-2	Auto cutter operation	ON	Enabled
2-4	Full Col Print	ON	Wait Data
3-1	Auto cutter restore	OFF	L/F enabled
3-7	CBM1000-compatible mode	ON	Compatible
3-8	Cover opened while printing	OFF	Auto restore
4-8	Forced partial	OFF	Disabled
5-2	Vertical basic calculation pitch	OFF	360 dots
6-1	Act. For Driver	ON	Valid
7-6	DMA control	Enable	-
9-1	Code page	Katakana (*1)	-
9-2	Foreign language characters	Japan (*1)	-
9-3	Kanji	Enable (*1)	-
9-4	JIS/Shift-JIS	Shift-JIS (*1)	-
13-6	Auto Reconnect (When Bluetooth I/F is used)	Invalid	-
13-1	Security/Target	Low/All	-
13-5	BT Device Scan	Discoverable	-
13-6	Auto Reconnect (When Bluetooth I/F is used)	Invalid	-

**CT-S281 Series Memory Switch Setting**

MSW No.	Function	Setting	Description
1-1	Power ON notify setting	OFF	Enabled

1-2	Input buffer	OFF	4KB
1-3	Busy condition	ON	Buffer full
1-4	Receiving error character	OFF	Character?
1-5	CR mode	OFF	Disabled
2-2	Auto cutter operation	ON	Enabled
1-7	Select DSR signal (when serial interface is used)	OFF	DSR
1-8	Select INIT signal (when serial interface is used)	OFF	-
2-4	Full Col Print	ON	Wait Data
3-1	Auto cutter restore	OFF	L/F enabled
3-7	CBM-270-compatible mode	ON	Compatible
3-8	Cover opened while printing	OFF	Auto restore
4-8	Forced partial	OFF	Disabled
5-3	USB Mode	ON	Printer Class
9-1	Code page	Katakana (*1)	-
9-2	Foreign language characters	Japan (*1)	-
9-3	Kanji	Enable (*1)	-
9-4	JIS/Shift-JIS	Shift-JIS (*1)	-
13-6	Auto Reconnect (When Bluetooth I/F is used)	Invalid	-

### CT-S310II Series Memory Switch Setting

MSW No.	Function	Setting	Description
1-1	Power ON notify setting	OFF	Enabled
1-2	Input buffer	OFF	4KB
1-3	Busy condition	ON	Buffer full
1-4	Receiving error character	OFF	Character?
1-5	CR mode	OFF	Disabled
2-2	Auto cutter operation	ON	Enabled
1-7	Select DSR signal (when serial interface is used)	OFF	DSR
1-8	Select INIT signal (when serial interface is used)	OFF	-
2-4	Full Col Print	ON	Wait Data
3-1	Auto cutter restore	OFF	L/F enabled
3-7	CBM1000-compatible mode	ON	Compatible
3-8	Cover opened while printing	OFF	Auto restore
4-8	Forced partial	OFF	Disabled
5-2	Vertical basic calculation pitch	OFF	360 dots
5-3	USB Mode	ON	Printer Class
6-1	Act. For Driver	ON	Valid
7-6	DMA control	Enable	-
9-1	Code page	Katakana (*1)	-
9-2	Foreign language characters	Japan (*1)	-
9-3	Kanji	Enable (*1)	-
9-4	JIS/Shift-JIS	Shift-JIS (*1)	-

### CT-S601/651/801/851 Series Memory Switch Setting

MSW No.	Function	Setting	Description
1-1	Power ON notify setting	OFF	Enabled
1-2	Input buffer	OFF	4KB
1-3	Busy condition	ON	Buffer full

MSW No.	Function	Setting	Description
1-4	Receiving error character	OFF	Character?
1-5	CR mode	OFF	Disabled
2-2	Auto cutter operation	ON	Enabled
1-7	Select DSR signal (when serial interface is used)	OFF	DSR
1-8	Select INIT signal (when serial interface is used)	OFF	-
2-4	Full Col Print	ON	Wait Data
3-1	Auto cutter restore	OFF	L/F enabled
3-3	Parallel 31Pin	OFF	Reset
3-7	CBM1000-compatible mode	ON	Compatible
3-8	Cover opened while printing	OFF	Auto restore
4-8	Forced partial	OFF	Disabled
5-2	Vertical basic calculation pitch	OFF	360 dots
5-3	USB Mode	ON	Printer Class
6-1	Act. For Driver	ON	Valid
7-6	DMA control	Enable	-
9-1	Code page	Katakana (*1)	-
9-2	Foreign language characters	Japan (*1)	-
9-3	Kanji	Enable (*1)	-
9-4	JIS/Shift-JIS	Shift-JIS (*1)	-
10-3	ACK output timing	Before BUSY	-

### CT-S601II/651II/801II/851II Series Memory Switch Setting

MSW No.	Function	Setting	Description
1-1	Power ON notify setting	OFF	Enabled
1-2	Input buffer	OFF	4KB
1-3	Busy condition	ON	Buffer full
1-4	Receiving error character	OFF	Character?
1-5	CR mode	OFF	Disabled
2-2	Auto cutter operation	ON	Enabled
1-7	Select DSR signal (when serial interface is used)	OFF	DSR
1-8	Select INIT signal (when serial interface is used)	OFF	-
2-4	Full Col Print	ON	Wait Data
3-1	Auto cutter restore	OFF	L/F enabled
3-3	Parallel 31Pin	OFF	Reset
3-7	CBM1000-compatible mode	ON	Compatible
3-8	Cover opened while printing	OFF	Auto restore
4-8	Forced partial	OFF	Disabled
5-2	Vertical basic calculation pitch	OFF	360 dots
5-3	USB Mode	ON	Printer Class
6-1	Act. For Driver	ON	Valid
7-6	DMA control	Enable	-
9-1	Code page	Katakana (*1)	-
9-2	Foreign language characters	Japan (*1)	-
9-4	Multi-byte Char (*2)	Japanese: SJIS(CP932) Chinese: GB18030 Korean: EUC Hangul Taiwanese: BIG5	-
10-3	ACK output timing	Before BUSY	-

MSW No.	Function	Setting	Description
13-1	Security/Target	Low/All	-
13-5	BT Device Scan	Discoverable	-
13-6	Auto Reconnect (When Bluetooth I/F is used)	Invalid	-

**CT-S2000 Series Memory Switch Setting**

MSW No.	Function	Setting	Description
1-1	Power ON notify setting	OFF	Enabled
1-2	Input buffer	OFF	4KB
1-3	Busy condition	ON	Buffer full
1-4	Receiving error character	OFF	Character?
1-5	CR mode	OFF	Disabled
2-2	Auto cutter operation	ON	Enabled
1-7	Select DSR signal (when serial interface is used)	OFF	DSR
1-8	Select INIT signal (when serial interface is used)	OFF	-
2-4	Full Col Print	ON	Wait Data
3-1	Auto cutter restore	OFF	L/F enabled
3-3	Parallel 31Pin	OFF	Reset
3-7	CBM1000-compatible mode	ON	Compatible
3-8	Cover opened while printing	OFF	Auto restore
4-8	Forced partial	OFF	Disabled
5-2	Vertical basic calculation pitch	OFF	360 dots
5-3	USB Mode	ON	Printer Class
7-6	DMA control	Enable	-
9-1	Code page	Katakana (*1)	-
9-2	Foreign language characters	Japan (*1)	-
9-3	Kanji	Enable (*1)	-
9-4	JIS/Shift-JIS	Shift-JIS (*1)	-
10-3	ACK output timing	Before BUSY	-

**CT-S4000 Series Memory Switch Setting**

MSW No.	Function	Setting	Description
1-1	Power ON notify setting	OFF	Enabled
1-2	Input buffer	OFF	4KB
1-3	Busy condition	ON	Buffer full
1-4	Receiving error character	OFF	Character?
1-5	CR mode	OFF	Disabled
2-2	Auto cutter operation	ON	Enabled
1-7	Select DSR signal (when serial interface is used)	OFF	DSR
1-8	Select INIT signal (when serial interface is used)	OFF	-
2-4	Full Col Print	ON	Wait Data
3-1	Auto cutter restore	OFF	L/F enabled
3-3	Parallel 31Pin	OFF	Reset
3-7	CBM1000-compatible mode	ON	Compatible
3-8	Cover opened while printing	OFF	Auto restore
4-8	Forced partial	OFF	Disabled
5-2	Vertical basic calculation pitch	OFF	360 dots

MSW No.	Function	Setting	Description
5-3	USB Mode	ON	Printer Class
7-6	DMA control	Enable	-
9-1	Code page	Katakana (*1)	-
9-2	Foreign language characters	Japan (*1)	-
9-3	Kanji	Enable (*1)	-
9-4	JIS/Shift-JIS	Shift-JIS (*1)	-
10-3	ACK output timing	Before BUSY	-

\*1 MSW No.9-1~4 is the setting when using Japanese. Please change it by use environment.

\*2 The CT-D150/151,CT-E351/651,CT-S601II/S651II/S801II/S851II series can change the Multi-byte character to Japanese, Chinese, Korean and Taiwanese. Please change it by use environment.

## Firmware

The firmware version of the printer has to be the following condition to use of this SDK in CT-S601/651/801/851 Series.

With the older printer than following, it is necessary to update the firmware.

Model	Firmware Version
CT-S601	DL00-2000 or newer
CT-S651	DM00-2000 or newer
CT-S801	DH00-2000 or newer
CT-S851	DK00-2000 or newer

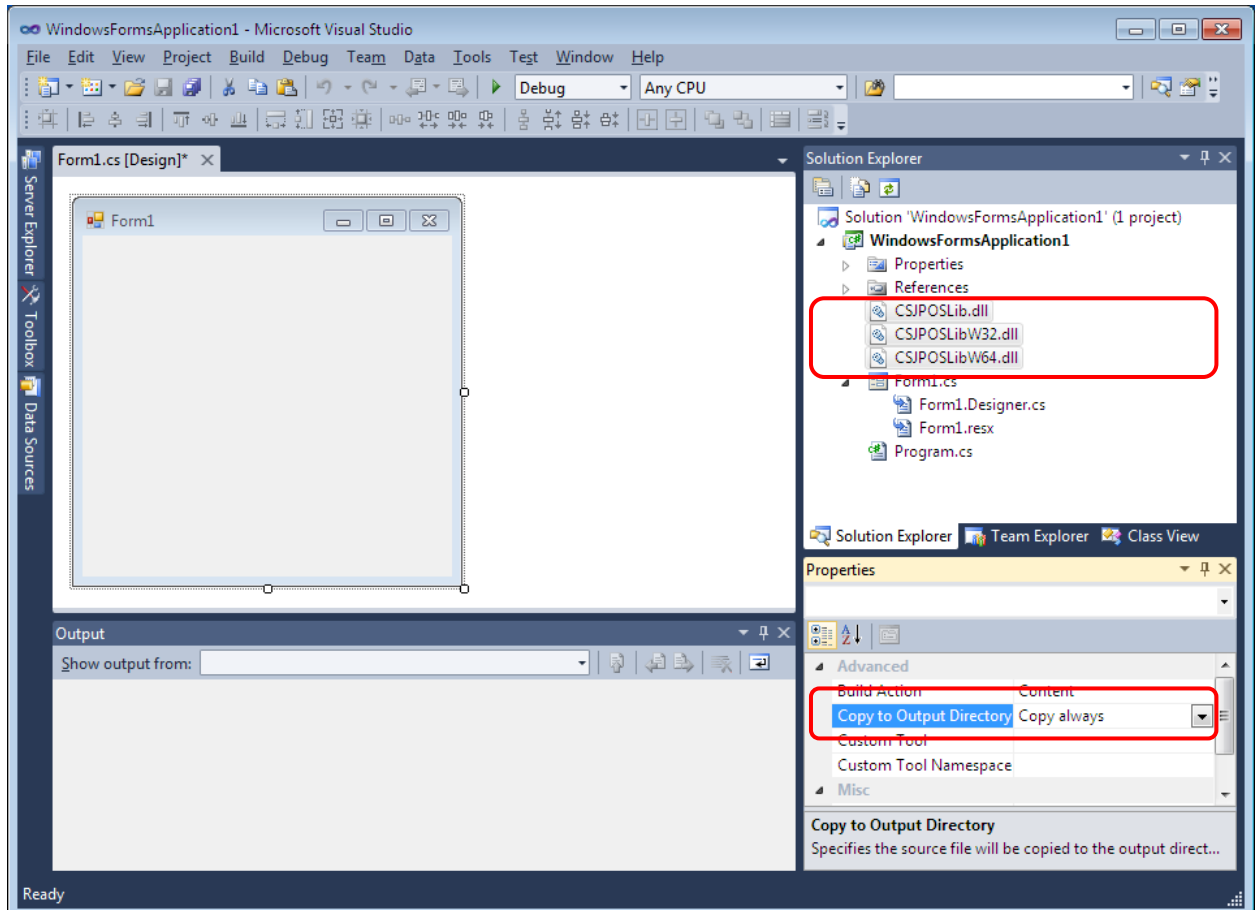


## 1.4. Definition method

### Adding Library

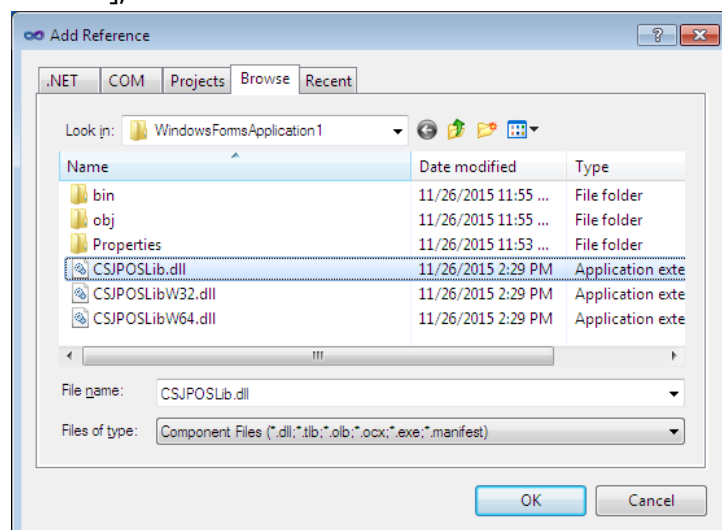
Simply drag and drop three dll files into your .net application in the Solution Explorer window. (The below picture is an example of Visual C# 2010 project.)

Then highlight each dll file and select "Copy always" for the property "Copy to Output Directory."



### Adding Reference

Go to [Project>Add Reference], select "CSJPOSLib.dll" and click "OK." No need to add other two dll files.



## **Adding Namespace**

A reference to the name space "com.citizen.sdk" must be stated at the top of the program source code.

In the case of C#:

```
using com.citizen.sdk;
```

In the case of Basic:

```
Imports com.citizen.sdk
```

In the case of C++:

```
using namespace com::citizen::sdk;
```

## 1.5. Program structure

Here is an example program in C# which uses the SDK.

```
// Create an instance.
ESCPOSPrinter printer = new ESCPOSPrinter();

// Set the serial port settings. (Serial only)
printer.SetCommProperties(ESCPOSConst.CMP_COM_BAUDRATE_9600,
    ESCPOSConst.CMP_COM_PARITY_NONE,
    ESCPOSConst.CMP_COM_HANDSHAKE_DTRDSR);

// Connect printer
int result = printer.Connect(ESCPOSConst.CMP_PORT_COM, "COM1:");
if (ESCPOSConst.CMP_SUCCESS == result)
{
    // Set encoding
    printer.SetEncoding("ISO-8859-1");

    // Start Transaction ( Batch )
    printer.TransactionPrint(ESCPOSConst.CMP_TP_TRANSACTION);

    // Print Text
    printer.PrintText("Citizen_POS_sample1_CS\n\n",
        ESCPOSConst.CMP_ALIGNMENT_CENTER, ESCPOSConst.CMP_FNT_DEFAULT,
        ESCPOSConst.CMP_TXT_1WIDTH | ESCPOSConst.CMP_TXT_1HEIGHT);
    printer.PrintText("- Sample Print 1 -\n",
        ESCPOSConst.CMP_ALIGNMENT_CENTER, ESCPOSConst.CMP_FNT_DEFAULT,
        ESCPOSConst.CMP_TXT_1WIDTH | ESCPOSConst.CMP_TXT_2HEIGHT);
    printer.PrintText("123456789012345678901234567890\n",
        ESCPOSConst.CMP_ALIGNMENT_RIGHT, ESCPOSConst.CMP_FNT_DEFAULT,
        ESCPOSConst.CMP_TXT_1WIDTH | ESCPOSConst.CMP_TXT_1HEIGHT);

    // Print QRcode
    printer.PrintQRCode("http://www.citizen-systems.co.jp/", 6,
        ESCPOSConst.CMP_QRCODE_EC_LEVEL_L,
        ESCPOSConst.CMP_ALIGNMENT_RIGHT);

    // Partial Cut with Pre-Feed
    printer.CutPaper(ESCPOSConst.CMP_CUT_PARTIAL_PREFEED);

    // End Transaction ( Batch )
    result = printer.TransactionPrint(ESCPOSConst.CMP_TP_NORMAL);

    // Disconnect
    printer.Disconnect();

    if (ESCPOSConst.CMP_SUCCESS != result)
    {
        // Print process Error
        MessageBox.Show("Transaction Error : " + result.ToString(),
            "Citizen_POS_sample1", MessageBoxButtons.OK,
            MessageBoxIcon.Error);
    }
}
else
{
    // Connect Error
    MessageBox.Show("Connect Error : " + result.ToString(),
        "Citizen_POS_sample1", MessageBoxButtons.OK, MessageBoxIcon.Error);
}
```

## 1.6. Functions list

This SDK provides the following functions.

### Methods list

No	Function	Detail
1	Create class (Constructor)	This is constructor method.
2	Connect printer (Connect method)	Connect to the printer.
3	Disconnect printer (Disconnect method)	Disconnect the printer connection.
4	Set com properties (SetCommProperties method)	Set the properties of serial connection.
5	Set encoding (SetEncoding method)	Set the encoding of character.
6	Check printer status (PrinterCheck method)	Sends command for status check of the printer.
7	Get printer status (Status method)	Get the status of the printer.
8	Print text (PrintText method)	Prints a text data.
9	Print space padding text (PrintPaddingText method)	Prints a text data with space padding.
10	Print PCFont text (PrintTextPCFont method)	Prints a text data using PC fonts.
11	Print bitmap (PrintBitmap method)	Prints a bitmap file. (BMP/JPG/PNG/GIF format)
12	Store NV bitmap (SetNVBitmap method)	Stores a bitmap image in the flash memory.
13	Print NV bitmap (PrintNVBitmap method)	Prints a bitmap image that is stored in the flash memory.
14	Print BarCode (PrintBarCode method)	Prints a one-dimensional barcode.
15	Print PDF-417 (PrintPDF417 method)	Prints a PDF417 barcode.
16	Print QRcode (PrintQRCode method)	Prints a QRCode barcode.
17	Print 2D GS1DataBar (PrintGS1DataBarStacked method)	Prints a 2-dimensional GS1DataBar barcode.
18	Cut paper (CutPaper method)	Cuts the paper.
19	Feed dot units (UnitFeed method)	Feeds the paper forward by dot units.
20	Feed mark (MarkFeed method)	Support for label / black mark paper.
21	Open drawer (OpenDrawer method)	Opens the drawer.
22	Transaction print (TransactionPrint method)	Enters or exits transaction mode.
23	Rotate print (RotatePrint method)	Enters or exits rotated print mode. (180°)
24	PageMode print (PageModePrint method)	Enters or exits page mode.
25	PageMode clear print area (ClearPrintArea method)	Clear the area of the page mode print area.
26	Clear output data (ClearOutput method)	Clears all buffered output data. (data and printer buffer)
27	Output data (PrintData method)	Sends to the printer without changing the data.

28	Print OPOS format (PrintNormal method)	Prints text using OPOS escape sequences.
29	Get version code (GetVersionCode method)	Get a numerical value for the version number of this SDK.
30	Get version name (GetVersionName method)	Get a string for the version number of this SDK.
31	Watermark print (WatermarkPrint method)	Enters or exits watermark print mode.
32	Search printer (SearchCitizenPrinter method)	Search the printer and get the list of printer information.
33	Search printer 2 (SearchESCPOSPrinter method)	Search the printer and get the list of addresses.
34	Set IP address (SetIPSettings method)	Set the IP address.
35	Connect and Check printer status (PrinterCheckEx method)	Connect and get the status of the printer.
36	Connect and Open Drawer (OpenDrawerEx method)	Connect and open the drawer.
37	Log settings (SetLog method)	Set the log function.

### Properties List

No	Function	Attribute	Detail
1	PageMode area (PageModeArea property)	R	Shows the page area of page mode.
2	PageMode print area (PageModePrintArea property)	R/W	Shows the print area of page mode.
3	PageMode print direction (PageModePrintDirection property)	R/W	Shows the print direction of page mode.
4	PageMode horizontal position (PageModeHorizontalPosition property)	R/W	Shows the horizontal start position offset within the print area of page mode.
5	PageMode vertical position (PageModeVerticalPosition property)	R/W	Shows the vertical start position offset within the print area of page mode.
6	Line spacing (RecLineSpacing property)	R/W	Show the spacing of each single-high print line.
7	Mapping mode (MapMode property)	R/W	Show the mapping mode (the unit of measure) of the printer.

## 2. Library interfaces

The following are the interfaces of this SDK.

### 2.1. Return value

Methods to be described later return the value in the list below.

Return value	Description
CMP_SUCCESS (0)	The operation is success.
CMP_E_CONNECTED (1001)	The printer is already connected.
CMP_E_DISCONNECT (1002)	The printer is not connected.
CMP_E_NOTCONNECT (1003)	Failed connection to the printer.
CMP_E_CONNECT_NOTFOUND (1004)	Failed to check the support model after connecting to the device.
CMP_E_CONNECT_OFFLINE (1005)	Failed to check the printer status after connecting to the device.
CMP_E_USB_BIDIRECTIONAL (1010)	The status feature of the Windows driver is enabled.
CMP_E_ILLEGAL (1101)	Unsupported operation with the Device, or an invalid parameter value was used.
CMP_E_OFFLINE (1102)	The printer is off-line.
CMP_E_NOEXIST (1103)	The file name does not exist.
CMP_E_FAILURE (1104)	The Service cannot perform the requested procedure.
CMP_E_TIMEOUT (1105)	The Service timed out waiting for a response from the printer.
CMP_E_NO_LIST (1106)	The printer cannot be found in the printer search.
CMP_EPTR_COVER_OPEN (1201)	The cover of the printer opens.
CMP_EPTR_REC_EMPTY (1202)	The printer is out of paper.
CMP_EPTR_BADFORMAT (1203)	The specified file is in an unsupported format.
CMP_EPTR_TOOBIG (1204)	The specified bitmap is either too big.

## 2.2. Constructor

### Syntax

ESCPOSPrinter ()

### Parameter

Not exist.

### Description

It is the constructor for the library. Create an instance.

### Return value

Not exist.

### Example

```
ESCPOSPrinter printer = new ESCPOSPrinter();
```

## 2.3. Connect method

### Syntax

- 1) int Connect (int connectType, string addr)
- 2) int Connect (int connectType, string addr, int port)
- 3) int Connect (int connectType, string addr, int port, int timeout)

### Parameter

The meaning and the setting range of the parameters are as follows.

Value	[IN/OUT]	Meaning	Setting range
connectType	[IN]	Connect type	CMP_PORT_WiFi CMP_PORT_USB CMP_PORT_COM CMP_PORT_LPT CMP_PORT_Bluetooth
addr	[IN]	IP address to connect or USB interface port (Virtual printer port for USB) or COM/LPT port or Bluetooth device address.	WiFi: 0.0.0.0 - 255.255.255.255 USB: USB001 - COM: COM1: - LPT: LPT1: - Bluetooth: 00:00:00:00:00:00 - FF:FF:FF:FF:FF:FF
port	[IN]	Connection port number	
timeout	[IN]	Timeout (msec)	

### Description

This method is used to connect the printer. Please specify the type and address of the printer connection.

Connection port number is valid only if you specify the connection type CMP\_PORT\_WiFi. If it is omitted, you connected with number 9100.

Timeout is gives the maximum number of milliseconds to connect printer. If it is omitted, you connected with 8000 milliseconds when using Bluetooth and connected with 4000 milliseconds in other cases.

When connecting to the printer, this SDK also checks the status of the printer and the supporting models.

When communication with the printer is not necessary, must execute the [Disconnect method](#) to disconnect the printer connection. When not disconnect, the next connection will be an error.

### Return value

Return CMP\_SUCCESS (0) in success. Please check the description of the error codes below in the case of failure. Please refer to "[2.1 Return value](#)" for the error code except it.

Error codes	Description
CMP_E_NOTCONNECT (1003)	Failed connection to the printer. (1) The printer is under none-connection status. (2) The printer is not turned ON. (3) Cannot obtain handle of interface board.
CMP_E_CONNECT_NOTFOUND (1004)	Failed to check the support model after connecting to the printer. (1) The model is not supported.
CMP_E_CONNECT_OFFLINE (1005)	Failed to check the printer status after connecting to the printer. The printer is connected but the following errors occurred. (1) The cover of the printer opens. (2) The printer is out of paper. (3) Auto Cutter Error occurred due to paper jam, etc.



	(4) Unrecoverable error occurred due to circuit failure, etc.
CMP_E_USB_BIDIRECTIONAL (1010)	The status feature of the Windows driver is enabled. "Enable bi-directional support" is on in the Port setting. (Please refer to "Installation of the Windows driver" of " <a href="#">1.2 System summary</a> ")

**Example**

```
printer.Connect( ESCPOSConst.CMP_PORT_WiFi, "192.168.182.100" );  
  
printer.Coconnect( ESCPOSConst.CMP_PORT_USB, "USB001" );  
  
printer.Connect( ESCPOSConst.CMP_PORT_COM, "COM1:" );  
  
printer.Connect( ESCPOSConst.CMP_PORT_LPT, "LPT1:" );  
  
printer.Connect( ESCPOSConst.CMP_PORT_Bluetooth, "00:01:90:DF:C1:1B" );
```

## 2.4. Disconnect method

### Syntax

int Disconnect ()

### Parameter

Not exist.

### Description

This method is used to disconnect the printer connection.

When the end of the print or some kind of errors occurs, please disconnect the connection by the execution of this method.

### Return value

Return CMP\_SUCCESS(0) in success. Please refer to "[2.1 Return value](#)" for the error code except it.

### Example

```
printer.Disconnect();
```

## 2.5. SetCommProperties method

### Syntax

```
int SetCommProperties(int baudRate, int parity, int handShake)
```

### Parameter

The meaning and the setting range of the parameters are as follows.

Value	[IN/OUT]	Meaning	Setting range
baudRate	[IN]	BaudRate	CMP_COM_BAUDRATE_1200 CMP_COM_BAUDRATE_2400 CMP_COM_BAUDRATE_4800 CMP_COM_BAUDRATE_9600 (default) CMP_COM_BAUDRATE_19200 CMP_COM_BAUDRATE_38400 CMP_COM_BAUDRATE_57600 CMP_COM_BAUDRATE_115200
parity	[IN]	Parity	CMP_COM_PARITY_NONE (default) CMP_COM_PARITY_ODD CMP_COM_PARITY_EVEN
handShake	[IN]	Handshake	CMP_COM_HANDSHAKE_DTRDSR (default) CMP_COM_HANDSHAKE_XONXOFF

### Description

This method is used to set the serial port settings of the terminal.

The communication cannot be performed when the same serial port setting is not made on the printer and the terminal. For the serial port setting of the printer, refer to the user's manual of the printer.

### Return value

Return CMP\_SUCCESS (0) in success. Please refer to ["2.1 Return value"](#) for the error code except it.

### Example

```
printer.SetCommProperties( ESCPOSConst.CMP_COM_BAUDRATE_9600,  
                          ESCPOSConst.CMP_COM_PARITY_NONE,  
                          ESCPOSConst.CMP_COM_HANDSHAKE_DTRDSR );  
printer.Connect( ESCPOSConst.CMP_PORT_COM, "COM1:" );
```

## 2.6. SetEncoding method

### Syntax

int SetEncoding (string charset)

### Parameter

The meaning and the setting range of the parameters are as follows.

Value	[IN/OUT]	Meaning	Setting range
charset	[IN]	Charcter set name	Encoding that is supported depends on the implementation of Windows.

### Description

This method is used to set the encoding of the send data to the printer.

When you create an instance, it is initialized to the default character set of the OS.

Please set the encoding by the setting of the memory switch of the printer. (Please refer to "[1.5 Supported models](#)")

When used in Japanese, it is necessary to specify the "Shift-JIS".

### Return value

Return CMP\_SUCCESS (0) in success. Please refer to "[2.1 Return value](#)" for the error code except it.

### Example

```
// Japanese
printer.SetEncoding( "Shift_JIS" );

// Chinese
printer.SetEncoding( "GB18030" );

// Korean
printer.SetEncoding( "EUC-KR" );

// Taiwanese
printer.SetEncoding( "BIG5" );
```

## 2.7. PrinterCheck method

### Syntax

int PrinterCheck ()

### Parameter

Not exist.

### Description

This method is used to send the command to get the status of the printer.

If the result of this method is successful, you can get the status of the printer by [Status method](#).

If the result of this method is failure, there is a possibility that the connection or the printer abnormality has occurred. In this case, please reconnect using the Disconnect method and the Connect method.

If you want to print after the connected and some time passed, please check the status of the printer by the execution of this method and the [Status method](#) beforehand.

In the case of network connection, it is automatically disconnected when passed a long time. If you want to keep a connection, please execute this method regularly.

### Return value

Return CMP\_SUCCESS (0) in success. Please refer to "[2.1 Return value](#)" for the error code except it.

### Example

```
if ( ESCPOSConst.CMP_SUCCESS == printer.PrinterCheck() ) {  
    // Success  
} else {  
    // Fail  
}
```

## 2.8. Status method

### Syntax

- 1) int Status ()
- 2) int Status (int type)

### Parameter

The meaning and the setting range of the parameters are as follows.

Value	[IN/OUT]	Meaning	Setting range
type	[IN]	Status type	CMP_STS_DRAWER_LEVEL_H CMP_STS_PAPER_NEAREMPTY CMP_STS_BATTERY_LOW CMP_STS_COVER_OPEN CMP_STS_PAPER_EMPTY CMP_STS_MSR_READ CMP_STS_PRINTEROFF

### Description

This method is used to get the status of the printer obtained by the PrinterCheck method.

Before the execution of this method, you must run the [printerCheck method](#).

When there is not a parameter, return the logical sum of the status (CMP\_STS\_COVER\_OPEN, CMP\_STS\_PAPER\_EMPTY, CMP\_STS\_PRINTEROFF) indicating the error of the printer.

When the status type is specified, return the status that matches. Status type can be specified in combination. If you want to combine, please specify the logical sum.

### Return value

Return the following status codes.

Status codes	Description
CMP_STS_NORMAL (0)	The printer is normal.
CMP_STS_DRAWER_LEVEL_H (2)	Status of pin 3 of drawer kick-out connector = H (when the type parameter is set)
CMP_STS_PAPER_NEAREMPTY (4)	Paper near empty. (when the type parameter is set)
CMP_STS_BATTERY_LOW (8)	Printer battery capacity is low. (CMP-20/30 only)
CMP_STS_COVER_OPEN (16)	The cover of the printer opens.
CMP_STS_PAPER_EMPTY (32)	The printer is out of paper.
CMP_STS_BATTERY_LOW (64)	Currently MSR in read mode. (CMP-20/30 only)
CMP_STS_PRINTEROFF (128)	The printer is off-line.

### Example

```
int status = printer.Status();
if ( ESCPOSConst.CMP_STS_NORMAL == status ) {
    // No Error
    int status2 = printer.Status(ESCPOSConst.CMP_STS_PAPER_NEAREMPTY);
    if ( (ESCPOSConst.CMP_STS_PAPER_NEAREMPTY & status2) > 0 ) {
        // Paper Near Empty
    }
} else {
    if ( (ESCPOSConst.CMP_STS_COVER_OPEN & status) > 0 ) {
        // Cover Open
    }
    if ( (ESCPOSConst.CMP_STS_PAPER_EMPTY & status) > 0 ) {
        // Paper Empty
    }
}
```

```
    }
    if ( (ESCPOSConst.CMP_STS_PRINTEROFF & status) > 0 ) {
        // Printer Offline
    }
}

int status3 = printer.Status(ESCPOSConst.CMP_STS_DRAWER_LEVEL_H);
if ( (ESCPOSConst.CMP_STS_DRAWER_LEVEL_H & status3) > 0 ) {
    // Status of pin 3 of drawer kick-out connector = H
}
```

## 2.9. PrintText method

### Syntax

int PrintText (string data, int alignment, int attribute, int textSize)

### Parameter

The meaning and the setting range of the parameters are as follows.

Value	[IN/OUT]	Meaning	Setting range
data	[IN]	Text data	
alignment	[IN]	Text alignment	CMP_ALIGNMENT_LEFT: Left alignment CMP_ALIGNMENT_CENTER: Center alignment CMP_ALIGNMENT_RIGHT: Right alignment
attribute	[IN]	Text attribute	CMP_FNT_DEFAULT: Default font CMP_FNT_FONTB: Font B CMP_FNT_FONTC: Font C CMP_FNT_BOLD: Bold CMP_FNT_REVERSE: Reverse CMP_FNT_UNDERLINE: Underline
textSize	[IN]	Text size	CMP_TXT_1WIDTH: 1 times width CMP_TXT_2WIDTH: 2 times width CMP_TXT_3WIDTH: 3 times width CMP_TXT_4WIDTH: 4 times width CMP_TXT_5WIDTH: 5 times width CMP_TXT_6WIDTH: 6 times width CMP_TXT_7WIDTH: 7 times width CMP_TXT_8WIDTH: 8 times width CMP_TXT_1HEIGHT: 1 times height CMP_TXT_2HEIGHT: 2 times height CMP_TXT_3HEIGHT: 3 times height CMP_TXT_4HEIGHT: 4 times height CMP_TXT_5HEIGHT: 5 times height CMP_TXT_6HEIGHT: 6 times height CMP_TXT_7HEIGHT: 7 times height CMP_TXT_8HEIGHT: 8 times height

### Description

This method is used to print text which specifies alignment and attribute and size.

Text attribute can be specified in combination font B, font C, bold, reverse, and underline. If you want to combine, please specify the logical sum.

Text size can be specified in combination with the width and height. If you want to combine, please specify the logical sum.

### Return value

Return CMP\_SUCCESS (0) in success. Please refer to ["2.1 Return value"](#) for the error code except it.

### Example

```
printer.PrintText( "Print text data.\n",
    ESCPOSConst.CMP_ALIGNMENT_CENTER,
    ESCPOSConst.CMP_FNT_BOLD | ESCPOSConst.CMP_FNT_UNDERLINE,
    ESCPOSConst.CMP_TXT_2WIDTH | ESCPOSConst.CMP_TXT_2HEIGHT );
```



## 2.10. PrintPaddingText method

### Syntax

int PrintPaddingText (string data, int attribute, int textSize, int length, int side)

### Parameter

The meaning and the setting range of the parameters are as follows.

Value	[IN/OUT]	Meaning	Setting range
data	[IN]	Text data	
attribute	[IN]	Text attribute	CMP_FNT_DEFAULT: Default font CMP_FNT_FONTB: Font B CMP_FNT_FONTC: Font C CMP_FNT_BOLD: Bold CMP_FNT_REVERSE: Reverse CMP_FNT_UNDERLINE: Underline
textSize	[IN]	Text size	CMP_TXT_1WIDTH: 1 times width CMP_TXT_2WIDTH: 2 times width CMP_TXT_3WIDTH: 3 times width CMP_TXT_4WIDTH: 4 times width CMP_TXT_5WIDTH: 5 times width CMP_TXT_6WIDTH: 6 times width CMP_TXT_7WIDTH: 7 times width CMP_TXT_8WIDTH: 8 times width CMP_TXT_1HEIGHT: 1 times height CMP_TXT_2HEIGHT: 2 times height CMP_TXT_3HEIGHT: 3 times height CMP_TXT_4HEIGHT: 4 times height CMP_TXT_5HEIGHT: 5 times height CMP_TXT_6HEIGHT: 6 times height CMP_TXT_7HEIGHT: 7 times height CMP_TXT_8HEIGHT: 8 times height
length	[IN]		1 -
side	[IN]		CMP_SIDE_RIGHT: Right side of text data CMP_SIDE_LEFT: Left side of text data

### Description

This method is used to print text with space padding which specifies attribute and size and length of the single-byte character equivalent and side where space is added.

Text attribute can be specified in combination font B, font C, bold, reverse, and underline. If you want to combine, please specify the logical sum.

Text size can be specified in combination with the width and height. If you want to combine, please specify the logical sum.

### Return value

Return CMP\_SUCCESS (0) in success. Please refer to ["2.1 Return value"](#) for the error code except it.

### Example

```
int nameSize = 24;           // Order name size
int priceSize = 7;          // Price size

// Line 1
printer->PrintPaddingText( "Sandwich",
    CMP_FNT_DEFAULT, CMP_TXT_1WIDTH, nameSize, CMP_SIDE_RIGHT );
```

```
printer->PrintPaddingText( "5.00",
    CMP_FNT_DEFAULT, CMP_TXT_1WIDTH, priceSize, CMP_SIDE_LEFT );
printer->PrintNormal("\n");

// Line 2
printer->PrintPaddingText( "Hamburg steak",
    CMP_FNT_DEFAULT, CMP_TXT_1WIDTH, nameSize, CMP_SIDE_RIGHT );
printer->PrintPaddingText( "12.00",
    CMP_FNT_DEFAULT, CMP_TXT_1WIDTH, priceSize, CMP_SIDE_LEFT );
printer->PrintNormal("\n");

// Line 3
printer->PrintPaddingText( "Coffee",
    CMP_FNT_DEFAULT, CMP_TXT_1WIDTH, nameSize, CMP_SIDE_RIGHT );
printer->PrintPaddingText( "2.00",
    CMP_FNT_DEFAULT, CMP_TXT_1WIDTH, priceSize, CMP_SIDE_LEFT );
printer->PrintNormal("\n");
```

## 2.11. PrintTextPCFont method

### Syntax

```
int PrintTextPCFont(string data, int alignment, string fntName, int point, int style, int hRatio,
                    int vRatio)
```

### Parameter

The meaning and the setting range of the parameters are as follows.

Value	[IN/OUT]	Meaning	Setting range
data	[IN]	Text data	
alignment	[IN]	Text alignment	CMP_ALIGNMENT_LEFT: Left alignment CMP_ALIGNMENT_CENTER: Center alignment CMP_ALIGNMENT_RIGHT: Right alignment
fntName	[IN]	Text Font	Font that is supported depends on the implementation of Windows.
point	[IN]	Text Size [Unit Point]	1 -
style	[IN]	Text Style	CMP_FNT_DEFAULT: Default font CMP_FNT_BOLD: Bold CMP_FNT_REVERSE: Reverse CMP_FNT_UNDERLINE: Underline CMP_FNT_ITALIC: Italic CMP_FNT_STRIKEOUT: Strikeout
hRatio	[IN]	Horizontal Enlargement Ratio [Unit %]	1 - 1000
vRatio	[IN]	Vertical Enlargement Ratio [Unit %]	1 - 1000

### Description

This method is used to print text of PC fonts which specifies alignment, font, size, style, and ratio.

Text style can be specified in combination bold, reverse, underline, italic, and strikeout. If you want to combine, please specify the logical sum.

### Return value

Return CMP\_SUCCESS (0) in success. Please refer to "[2.1 Return value](#)" for the error code except it.

### Example

```
printer.PrintTextPCFont( "Print PC font data.\n",
                        ESCPOSConst.CMP_ALIGNMENT_CENTER,
                        "Arial", 30,
                        ESCPOSConst.CMP_FNT_BOLD | ESCPOSConst.CMP_FNT_UNDERLINE,
                        100, 100);
```

## 2.12. PrintBitmap method

### Syntax

- 1) int PrintBitmap (string fileName, int alignment)
- 2) int PrintBitmap (string fileName, int width, int alignment)
- 3) int PrintBitmap (string fileName, int width, int alignment, int mode)
- 4) int PrintBitmap (Bitmap bitmap, int alignment)
- 5) int PrintBitmap (Bitmap bitmap, int width, int alignment)
- 6) int PrintBitmap (Bitmap bitmap, int width, int alignment, int mode)
- 7) int PrintBitmap (byte[] bytes, int alignment)
- 8) int PrintBitmap (byte[] bytes, int width, int alignment)
- 9) int PrintBitmap (byte[] bytes, int width, int alignment, int mode)

### Parameter

The meaning and the setting range of the parameters are as follows.

Value	[IN/OUT]	Meaning	Setting range
fileName	[IN]	Bitmap file name	
bitmap	[IN]	Bitmap type data	
bytes	[IN]	Byte array representation of the bitmap	
width	[IN]	Bitmap width	CMP_BM_ASIS: Print the bitmap with one bitmap pixel per printer dot. Other Values: Bitmap width expressed. Expressed in the unit of measure given by <a href="#">MapMode</a> (default dots).
alignment	[IN]	Bitmap alignment	CMP_ALIGNMENT_LEFT: Left alignment CMP_ALIGNMENT_CENTER: Center alignment CMP_ALIGNMENT_RIGHT: Right alignment Other Values: Distance from the left-most print column to the start of the bitmap. Expressed in the unit of measure given by <a href="#">MapMode</a> (default dots).
mode	[IN]	Bitmap mode	CMP_BM_MODE_HT_THRESHOLD: Halftone threshold CMP_BM_MODE_HT_DITHER: Halftone dither  CMP_BM_MODE_CMD_RASTER: Raster command output CMP_BM_MODE_CMD_BITIMAGE: Bitimage command output CMP_BM_MODE_CMD_GRAY16: Grayscale (4bpp) output

### Description

This method is used to print bitmap which specifies file name or bitmap and width and alignment and mode.

Printable bitmap formats are BMP / JPG / PNG / GIF.

If the bitmap width is omitted, printing in CMP\_BM\_ASIS.

Mode can be specified in combination with the halftone and output method. If you want to combine, please specify the logical sum. If mode is omitted, printed at CMP\_BM\_MODE\_HT\_THRESHOLD | CMP\_BM\_MODE\_CMD\_RASTER.

For more information on mode is as follows.

Halftone Specify the halftone treatment method.

Value	Description
CMP_BM_MODE_HT_THRESHOLD	Threshold Suitable for characters printing.
CMP_BM_MODE_HT_DITHER	Dither Suitable for graphics printing.

Output Specify the output method.

Value	Description
CMP_BM_MODE_CMD_RASTER	Raster command output Suitable for small data printing. In order to output the data collectively, there is a height limit (2,304 dots 28cm approximately).
CMP_BM_MODE_CMD_BITIMAGE	Bit image command output Suitable for large data printing. In order to output the split data, there is no height limit. Not available in CMP-20/30.
CMP_BM_MODE_CMD_GRAY16	Grayscale(4bpp) output Available in CT-D151, CT-E651, CT-S251/601II/651II/801II/851II. Graphic can be printed more beautifully.

### Return value

Return CMP\_SUCCESS (0) in success. Please refer to ["2.1 Return value"](#) for the error code except it.

### Example

```
printer.PrintBitmap( "samplebitmap.bmp",
    ESCPOSConst.CMP_BM_ASIS,
    ESCPOSConst.CMP_ALIGNMENT_CENTER
    ESCPOSConst.CMP_BM_MODE_HT_DITHER|ESCPOSConst.CMP_BM_MODE_CMD_RASTER );
```

## 2.13. SetNVBitmap method

### Syntax

- 1) int SetNVBitmap (int number, string fileName, int width)
- 2) int SetNVBitmap (int number, string fileName, int width, int mode)

### Parameter

The meaning and the setting range of the parameters are as follows.

Value	[IN/OUT]	Meaning	Setting range
number	[IN]	Number of bitmap to store in the flash memory of the printer	1 - 20
fileName	[IN]	File name of bitmap to store	
width	[IN]	Bitmap width	CMP_BM_ASIS: Print the bitmap with one bitmap pixel per printer dot. Other Values: Bitmap width expressed. Expressed in the unit of measure given by <a href="#">MapMode</a> (default dots).
mode	[IN]	Bitmap mode	CMP_BM_MODE_HT_THRESHOLD: Halftone threshold CMP_BM_MODE_HT_DITHER: Halftone dither  CMP_BM_MODE_CMD_MONO Monochrome storing CMP_BM_MODE_CMD_GRAY16 Grayscale (4bpp) storing

### Description

This method is used to store bitmap which specifies number and file name and width and mode. The stored bitmap can print using [PrintNVBitmap method](#) or [WatermarkPrint method](#).

The fileName parameter sets the full path of the bitmap file to store.

The bitmap formats that can be stored are BMP / JPG / PNG / GIF / TIFF.

If the width parameter is omitted, it is in CMP\_BM\_ASIS to store.

The mode parameter can be specified in combination with the halftone and store method. To use of the combination, please specify the logical sum. If the mode parameter is omitted, it is in CMP\_BM\_MODE\_HT\_THRESHOLD | CMP\_BM\_MODE\_CMD\_MONO to store.

For more information on the mode parameter is as follows.

Halftone Specify the halftone treatment method.

Value	Description
CMP_BM_MODE_HT_THRESHOLD	Threshold Suitable for characters printing.
CMP_BM_MODE_HT_DITHER	Dither Suitable for graphics printing.

Storing Specify the storing method.

Value	Description
-------	-------------

CMP_BM_MODE_CMD_MONO	Monochrome storing
CMP_BM_MODE_CMD_GRAY16	Grayscale storing Available in CT-D151, CT-E651, CT-S251/601II/651II/ 801II/851II. Graphic can be stored more beautifully.

[CT-S281, CMP-20/30 Series]

It is necessary that the bitmap numbers are contiguous from number 1. If you register a new bitmap after the connection, the bitmap that was previously registered will be erased.

The CMP-20/30 series, please register with a USB connection. The CMP-20 series is automatically disconnected because the printer is reset when the registration is completed.

[CT-D150/151,CT-E351/651,CT-S251/310II/601/651/801/851/601II/651II/801II/851II/2000/4000 Series]

It is not necessary that the bitmap numbers are contiguous. And it is possible to remove a registered image by assigning the fileName parameter as an empty string.

### Return value

Return CMP\_SUCCESS (0) in success. Please refer to "[2.1 Return value](#)" for the error code except it.

### Example

```
printer.SetNVBitmap( 1, "samplebitmap.bmp",
    ESCPOSConst.CMP_BM_ASIS,
    ESCPOSConst.CMP_BM_MODE_HT_DITHER|ESCPOSConst.CMP_BM_MODE_CMD_MONO );
```

## 2.14. PrintNVBitmap method

### Syntax

```
int PrintNVBitmap (int nvImageNumber)
```

### Parameter

The meaning and the setting range of the parameters are as follows.

Value	[IN/OUT]	Meaning	Setting range
nvImageNumber	[IN]	Bitmap image number that is stored in the flash memory of the printer	1 - 20

### Description

This method is used to print bitmap image (Logo) that is stored in the flash memory of the printer. To use this method, you need to register of the logo in advance. Logo registration, please store it using [setNVBitmap method](#) or use the "POS Printer utility" of utility software for the printer. Registration mode varies among the model of the printer. Please register as follows.

[CT-S281, CMP-20/30 Series]

Please register the logo with "Unused key code mode".

To the image number to use, it is necessary to register the logo sequentially.

[CT-D150/151,CT-E351/651,CT-S251/310II/601/651/801/851/601II/651II/801II/851II/2000/4000 Series]

Please register the logo with "Key code mode".

To the image number to use, it is necessary to register the logo that specifies the key code.

The key code corresponding to the image number is as follows.

Image number	Key code (Characters)
1	"01"
2	"02"
3	"03"
⋮	⋮
19	"19"
20	"20"

### Return value

Return CMP\_SUCCESS (0) in success. Please refer to ["2.1 Return value"](#) for the error code except it.

### Example

```
printer.PrintNVBitmap( 1 );
```



## 2.15. PrintBarCode method

### Syntax

int PrintBarCode (string data, int symbology, int height, int width, int alignment, int textPosition)

### Parameter

The meaning and the setting range of the parameters are as follows.

Value	[IN/OUT]	Meaning	Setting range
data	[IN]	Barcode data	
symbology	[IN]	Barcode symbol type	CMP_BCS_UPCA: UPC-A CMP_BCS_UPCE: UPC-E CMP_BCS_EAN8: EAN8 (=JAN8) CMP_BCS_JAN8: JAN8 (=EAN8) CMP_BCS_EAN13: EAN13 (=JAN13) CMP_BCS_JAN13: JAN13 (=EAN13) CMP_BCS_ITF: Interleaved 2 of 5 CMP_BCS_Codabar: Codabar CMP_BCS_Code39: Code 39 CMP_BCS_Code93: Code 93 CMP_BCS_Code128: Code 128 CMP_BCS_GS1DATABAR: GS1 DataBar Omnidirectional CMP_BCS_GS1DATABAR_E: GS1 DataBar Expanded CMP_BCS_GS1DATABAR_T: GS1 DataBar Truncated CMP_BCS_GS1DATABAR_L: GS1 DataBar Limited
height	[IN]	Barcode height	1 - 255 (dots) Expressed in the unit of measure given by <a href="#">MapMode</a> (default dots).
width	[IN]	Barcode horizontal size (magnification)	2 - 6 (dots) Expressed in the unit of measure given by <a href="#">MapMode</a> (default dots).
alignment	[IN]	Barcode alignment	CMP_ALIGNMENT_LEFT: Left alignment CMP_ALIGNMENT_CENTER: Center alignment CMP_ALIGNMENT_RIGHT: Right alignment Other Values: Distance from the left-most print column to the start of the barcode. Expressed in the unit of measure given by <a href="#">MapMode</a> (default dots).
textPosition	[IN]	HRI characters position	CMP_HRI_TEXT_NONE: No printing CMP_HRI_TEXT_ABOVE: Above the barcode CMP_HRI_TEXT_BELOW: Below the barcode

### Description

This method is used to print one-dimensional barcode.

GS1 DataBar (CMP\_BCS\_GS1DATABAR, CMP\_BCS\_GS1DATABAR\_E, CMP\_BCS\_GS1DATABAR\_T, CMP\_BCS\_GS1DATABAR\_L) can use only the printers of CT-D150/151,CT-E351/651,CT-S251/310II/601/651/801/851/601II/651II/801II/851II series.

The designation of CMP\_ALIGNMENT\_CENTER and CMP\_ALIGNMENT\_RIGHT of the Barcode alignment on the page mode is ignored.

**Return value**

Return CMP\_SUCCESS (0) in success. Please refer to "[2.1 Return value](#)" for the error code except it.

**Example**

```
printer.PrintBarcode( "123456789012",  
    ESCPOSConst.CMP_BCS_UPCA,  
    50,  
    2,  
    ESCPOSConst.CMP_ALIGNMENT_LEFT,  
    ESCPOSConst.CMP_HRI_TEXT_ABOVE );
```

## 2.16. PrintPDF417 method

### Syntax

int PrintPDF417 (string data, int digits, int steps, int moduleWidth, int stepHeight, int ECLevel, int alignment)

### Parameter

The meaning and the setting range of the parameters are as follows.

Value	[IN/OUT]	Meaning	Setting range
data	[IN]	Barcode data	
digits	[IN]	Digits number	0: automatic 1 - 30
steps	[IN]	Steps number	0: automatic 3 - 90
moduleWidth	[IN]	Module width	2 - 8 (dots) Expressed in the unit of measure given by <a href="#">MapMode</a> (default dots).
stepHeight	[IN]	Height of step	2 - 8
ECLevel	[IN]	Error correction level	CMP_PDF417_EC_LEVEL_0: Level 0 CMP_PDF417_EC_LEVEL_1: Level 2 CMP_PDF417_EC_LEVEL_2: Level 2 CMP_PDF417_EC_LEVEL_3: Level 3 CMP_PDF417_EC_LEVEL_4: Level 4 CMP_PDF417_EC_LEVEL_5: Level 5 CMP_PDF417_EC_LEVEL_6: Level 6 CMP_PDF417_EC_LEVEL_7: Level 7 CMP_PDF417_EC_LEVEL_8: Level 8
alignment	[IN]	Barcode alignment	CMP_ALIGNMENT_LEFT: Left alignment CMP_ALIGNMENT_CENTER: Center alignment CMP_ALIGNMENT_RIGHT: Right alignment Other Values: Distance from the left-most print column to the start of the barcode. Expressed in the unit of measure given by <a href="#">MapMode</a> (default dots).

### Description

This method is used to print PDF-417 barcode.

Please refer to the Command Reference of the printer for details on each parameter.

The designation of CMP\_ALIGNMENT\_CENTER and CMP\_ALIGNMENT\_RIGHT of the Barcode alignment on the page mode is ignored.

### Return value

Return CMP\_SUCCESS (0) in success. Please refer to "[2.1 Return value](#)" for the error code except it.

### Example

```
printer.PrintPDF417(
    "http://www.citizen-systems.co.jp/printer/index.html",
    0, 0, 3, 3,
    ESCPOSConst.CMP_PDF417_EC_LEVEL_0,
    ESCPOSConst.CMP_ALIGNMENT_LEFT );
```

## 2.17. PrintQRCode method

### Syntax

int PrintQRCode (string data, int moduleSize, int ECLevel, int alignment)

### Parameter

The meaning and the setting range of the parameters are as follows.

Value	[IN/OUT]	Meaning	Setting range
data	[IN]	Barcode data	
moduleSize	[IN]	Module width	1 - 16 (dots) Expressed in the unit of measure given by <a href="#">MapMode</a> (default dots).
ECLevel	[IN]	Error correction level	CMP_QRCODE_EC_LEVEL_L: Level L (7%) CMP_QRCODE_EC_LEVEL_M: Level M (15%) CMP_QRCODE_EC_LEVEL_Q: Level Q (25%) CMP_QRCODE_EC_LEVEL_H: Level H (30%)
alignment	[IN]	Barcode alignment	CMP_ALIGNMENT_LEFT: Left alignment CMP_ALIGNMENT_CENTER: Center alignment CMP_ALIGNMENT_RIGHT: Right alignment Other Values: Distance from the left-most print column to the start of the barcode. Expressed in the unit of measure given by <a href="#">MapMode</a> (default dots).

### Description

This method is used to print QRCode barcode.

Please refer to the Command Reference of the printer for details on each parameter.

The designation of CMP\_ALIGNMENT\_CENTER and CMP\_ALIGNMENT\_RIGHT of the Barcode alignment on the page mode is ignored.

### Return value

Return CMP\_SUCCESS (0) in success. Please refer to "[2.1 Return value](#)" for the error code except it.

### Example

```
printer.PrintQRCode(
    "http://www.citizen-systems.co.jp/printer/index.html",
    4,
    ESCPOSConst.CMP_QRCODE_EC_LEVEL_L,
    ESCPOSConst.CMP_ALIGNMENT_LEFT );
```

## 2.18. PrintGS1DataBarStacked method

### Syntax

int PrintGS1DataBarStacked (string data, int symbology, int moduleSize, int maxSize, int alignment)

### Parameter

The meaning and the setting range of the parameters are as follows.

Value	[IN/OUT]	Meaning	Setting range
data	[IN]	Barcode data	
symbology	[IN]	Barcode symbol type	CMP_BCS_GS1DATABAR_S : GS1 DataBar Stacked CMP_BCS_GS1DATABAR_E_S : GS1 DataBar Expanded Stacked CMP_BCS_GS1DATABAR_S_O : GS1 DataBar Stacked Omnidirectional
moduleSize	[IN]	Module width	2 - 8 (dots) Expressed in the unit of measure given by <a href="#">MapMode</a> (default dots).
maxSize	[IN]	Max width	106 - 39528 (dots) Max width of GS1 DataBar Expanded Stacked. Expressed in the unit of measure given by <a href="#">MapMode</a> (default dots).
alignment	[IN]	Barcode alignment	CMP_ALIGNMENT_LEFT: Left alignment CMP_ALIGNMENT_CENTER: Center alignment CMP_ALIGNMENT_RIGHT: Right alignment Other Values: Distance from the left-most print column to the start of the barcode. Expressed in the unit of measure given by <a href="#">MapMode</a> (default dots).

### Description

This method is used to print 2-dimensional GS1 DataBar barcode.

This method can use only the printers of CT-D150/151,CT-E351/651,CT-S251/310II/601/651/801/851/601II/651II/801II/851II series.

Please refer to the Command Reference of the printer for details on each parameter.

The designation of CMP\_ALIGNMENT\_CENTER and CMP\_ALIGNMENT\_RIGHT of the Barcode alignment on the page mode is ignored.

### Return value

Return CMP\_SUCCESS (0) in success. Please refer to "[2.1 Return value](#)" for the error code except it.

### Example

```
printer.PrintGS1DataBarStacked(
    "0123456789012",
    ESCPOSConst.CMP_BCS_GS1DATABAR_S,
    4,
    300,
    ESCPOSConst.CMP_ALIGNMENT_LEFT );
```

## 2.19. CutPaper method

### Syntax

int CutPaper (int type)

### Parameter

The meaning and the setting range of the parameters are as follows.

Value	[IN/OUT]	Meaning	Setting range
type	[IN]	Cut type	CMP_CUT_FULL: Full cut CMP_CUT_PARTIAL: Partial cut CMP_CUT_FULL_PREFEED : After feed the paper to the cutting position, full cut. CMP_CUT_PARTIAL_PREFEED : After feed the paper to the cutting position, partial cut.

### Description

This method is used to cut the paper.

### Return value

Return CMP\_SUCCESS (0) in success. Please refer to "[2.1 Return value](#)" for the error code except it.

### Example

```
printer.CutPaper( ESCPOSConst.CMP_CUT_PARTIAL_PREFEED );
```

## 2.20. UnitFeed method

### Syntax

```
int UnitFeed (int ufCount)
```

### Parameter

The meaning and the setting range of the parameters are as follows.

Value	[IN/OUT]	Meaning	Setting range
ufCount	[IN]	Number of paper feed	Expressed in the unit of measure given by <a href="#">MapMode</a> (default dots).

### Description

This method is used to feed the paper in dot units.

### Return value

Return CMP\_SUCCESS (0) in success. Please refer to "[2.1 Return value](#)" for the error code except it.

### Example

```
printer.UnitFeed( 200 );
```

## 2.21. MarkFeed method

### Syntax

int MarkFeed (int type)

### Parameter

The meaning and the setting range of the parameters are as follows.

Value	[IN/OUT]	Meaning	Setting range
type	[IN]	Handling type of label paper or black mark paper	CMP_MF_TO_CUTTER : After feed the paper to the auto cutter cutting position, cut further. CMP_MF_TO_NEXT_TOF : Feed the paper to the next paper's top of form.

### Description

This method is used to utilize label paper and black mark paper.

### Return value

Return CMP\_SUCCESS (0) in success. Please refer to "[2.1 Return value](#)" for the error code except it.

### Example

```
printer.MarkFeed( ESCPOSConst.CMP_MF_TO_CUTTER );
```



## 2.22. OpenDrawer method

### Syntax

int OpenDrawer (int drawer, int pulseLen)

### Parameter

The meaning and the setting range of the parameters are as follows.

Value	[IN/OUT]	Meaning	Setting range
drawer	[IN]	Cash drawer number	CMP_DRAWER_1: Drawer 1 CMP_DRAWER_2: Drawer 2
pulseLen	[IN]	Signal length	1 - 8 (x 100) msec

### Description

This method is used to open the cash drawer is connected to the printer.

This method can execute even if the printer error (cover open or paper empty). However, if the transaction mode with the [TransactionPrint method](#), cannot execute when the printer error.

### Return value

Return CMP\_SUCCESS (0) in success. Please refer to "[2.1 Return value](#)" for the error code except it.

### Example

```
printer.OpenDrawer( ESCPOSConst.CMP_DRAWER_1, 1 );
```

## 2.23. TransactionPrint method

### Syntax

```
int TransactionPrint (int control)
```

### Parameter

The meaning and the setting range of the parameters are as follows.

Value	[IN/OUT]	Meaning	Setting range
control	[IN]	Transaction control	CMP_TP_TRANSACTION : Begin a transaction. CMP_TP_NORMAL : End a transaction by printing the buffered data.

### Description

This method is used to start or end a transaction mode.

If control is CMP\_TP\_TRANSACTION, then transaction mode is entered. Subsequent methods calls will buffer the print data. The methods applied to a transaction mode are as follows.

PrintText, PrintTextPCFont, PrintPaddingText, PrintBitmap, PrintNVBitmap, PrintBarCode, PrintPDF417, PrintQRCode, PrintGS1DataBarStacked, CutPaper, UnitFeed, MarkFeed, OpenDrawer, RotatePrint, PageModePrint, ClearPrintArea, PrintData, PrintNormal

If control is CMP\_TP\_NORMAL, then transaction mode is exited. If some data was buffered, then the buffered data is printed. The entire transaction is treated as one message.

Calling the [ClearOutput method](#) cancels transaction mode. Any buffered print lines are also cleared.

### Return value

Return CMP\_SUCCESS (0) in success. Please refer to ["2.1 Return value"](#) for the error code except it.

### Example

```
printer.TransactionPrint( ESCPOSConst.CMP_TP_TRANSACTION );
printer.PrintNVBitmap( 1 );
printer.PrintBarCode( "123456789012", ESCPOSConst.CMP_BCS_UPCA, 50, 2,
    ESCPOSConst.CMP_ALIGNMENT_LEFT, ESCPOSConst.CMP_HRI_TEXT_ABOVE );
printer.PrintText( "Line 1\n", ESCPOSConst.CMP_ALIGNMENT_LEFT,
    ESCPOSConst.CMP_FNT_DEFAULT, ESCPOSConst.CMP_TXT_1WIDTH );
printer.PrintText( "Line 2\n", ESCPOSConst.CMP_ALIGNMENT_LEFT,
    ESCPOSConst.CMP_FNT_DEFAULT, ESCPOSConst.CMP_TXT_1WIDTH );
printer.PrintText( "Line 3\n", ESCPOSConst.CMP_ALIGNMENT_LEFT,
    ESCPOSConst.CMP_FNT_DEFAULT, ESCPOSConst.CMP_TXT_1WIDTH );
printer.PrintBarCode( "123456789012", ESCPOSConst.CMP_BCS_UPCA, 50, 2,
    ESCPOSConst.CMP_ALIGNMENT_LEFT, ESCPOSConst.CMP_HRI_TEXT_ABOVE );
printer.PrintNVBitmap( 1 );
printer.CutPaper( ESCPOSConst.CMP_CUT_PARTIAL_PREFEED );
printer.TransactionPrint( ESCPOSConst.CMP_TP_NORMAL );
```

## 2.24. RotatePrint method

### Syntax

int RotatePrint (int rotation)

### Parameter

The meaning and the setting range of the parameters are as follows.

Value	[IN/OUT]	Meaning	Setting range
rotation	[IN]	Direction of rotation	CMP_RP_ROTATE180: Start rotated printing 180°, that is, print upside-down CMP_RP_BARCODE : Start rotated bar code printing. This value is ORed with the above start rotated print values. CMP_RP_BITMAP : Start rotated bitmap printing. This value is ORed with the above start rotated print values. CMP_RP_NORMAL : End rotated printing

### Description

This method is used to start or end a rotation print mode.

If rotation includes PTR\_RP\_ROTATE180, then upside-down print mode is entered. The methods applied to a rotation print mode are as follows.

PrintText, PrintPaddingText, PrintNormal

If rotation includes PTR\_RP\_BARCODE and/or PTR\_RP\_BITMAP, the following methods are printed also rotated.

PrintBarcode, PrintPDF417, PrintQRCode, PrintGS1DataBarStacked and/or PrintBitmap,

PrintTextPCFont

If rotation is CMP\_RP\_NORMAL, then rotation mode is exited.

### Return value

Return CMP\_SUCCESS (0) in success. Please refer to ["2.1 Return value"](#) for the error code except it.

### Example

```
printer.RotatePrint( ESCPOSConst.CMP_RP_ROTATE180 |
    ESCPOSConst.CMP_RP_BARCODE | ESCPOSConst.CMP_RP_BITMAP );
printer.PrintBitmap( "samplebitmap.bmp", ESCPOSConst.CMP_BM_ASIS,
    ESCPOSConst.CMP_ALIGNMENT_CENTER );
printer.PrintBarcode( "123456789012", ESCPOSConst.CMP_BCS_UPCA, 50, 2,
    ESCPOSConst.CMP_ALIGNMENT_LEFT, ESCPOSConst.CMP_HRI_TEXT_ABOVE );
printer.PrintText( "Line 3\n", ESCPOSConst.CMP_ALIGNMENT_LEFT,
    ESCPOSConst.CMP_FNT_DEFAULT, ESCPOSConst.CMP_TXT_1WIDTH );
printer.PrintText( "Line 2\n", ESCPOSConst.CMP_ALIGNMENT_LEFT,
    ESCPOSConst.CMP_FNT_DEFAULT, ESCPOSConst.CMP_TXT_1WIDTH );
printer.PrintText( "Line 1\n", ESCPOSConst.CMP_ALIGNMENT_LEFT,
    ESCPOSConst.CMP_FNT_DEFAULT, ESCPOSConst.CMP_TXT_1WIDTH );
printer.RotatePrint( ESCPOSConst.CMP_RP_NORMAL );
```

## 2.25. PageModePrint method

### Syntax

int PageModePrint (int control)

### Parameter

The meaning and the setting range of the parameters are as follows.

Value	[IN/OUT]	Meaning	Setting range
control	[IN]	Page Mode control	CMP_PM_PAGE_MODE: Enter Page Mode CMP_PM_PRINT_SAVE: Print PageModePrintArea and save the canvas CMP_PM_NORMAL: Print the print area and destroy the canvas and exit Page Mode. CMP_PM_CANCEL: Clear the page and exit the Page Mode without any printing of any print area

### Description

This method is used to start or end a Page Mode.

If control is PTR\_PM\_PAGE\_MODE, then Page Mode is entered. Subsequent methods calls will buffer the print data. The methods applied to a Page Mode are as follows.

PrintText, PrintPaddingText, PrintTextPCFont, PrintBitmap, PrintBarcode, PrintPDF417, PrintQRCode, PrintGS1DataBarStacked, PrintNormal

If control is PTR\_PM\_PRINT\_SAVE, then Page Mode is not exited. If some data is buffered, then the buffered data is saved and printed. This control is used to print the same page layout with additional print items inside of the page.

If control is PTR\_PM\_NORMAL, then Page Mode is exited. If some data is buffered, then the buffered data is printed. The buffered data will not be saved.

If control is PTR\_PM\_CANCEL, then Page Mode is exited. If some data is buffered, then the buffered data is not printed and is not saved.

Note that when the PageModePrint method is called, all of the data that is to be printed in the PageModePrintArea will be printed and the paper is fed to the end of the PageModePrintArea. If more than one PageModePrintArea is defined, then after the PageModePrint method is called, all of the data that is to be printed in the respective PageModePrintArea(s) will be printed and the paper will be fed to the end of the PageModePrintArea located the farthest "down" the sheet of paper.

The entire Page Mode transaction is treated as one message.

Calling the [ClearOutput method](#) cancels Page Mode. Any buffered print lines are also cleared.

### Return value

Return CMP\_SUCCESS (0) in success. Please refer to "[2.1 Return value](#)" for the error code except it.

**Example**

```
// Standard print
printer.PrintNormal( "\u001b|2vCSample 2 - Print\n");
printer.PrintText("12345678901234567890123456789012345678901234567890123456789012345678901234567890\n",
    ESCPOSConst.CMP_ALIGNMENT_RIGHT, ESCPOSConst.CMP_FNT_DEFAULT,
    ESCPOSConst.CMP_TXT_1WIDTH | ESCPOSConst.CMP_TXT_1HEIGHT);

// Start of Page Mode
printer.PageModePrint( ESCPOSConst.CMP_PM_PAGE_MODE );
// Set offset of Page Mode
printer.SetPageModeVerticalPosition( 0 );
printer.SetPageModeHorizontalPosition( 0 );
// Set direction of Page Mode
printer.SetPageModePrintDirection( ESCPOSConst.CMP_PD_TOP_TO_BOTTOM );
// Set print area of Page Mode
printer.SetPageModePrintArea( "308,0,76,800" );
printer.PrintNormal( "\u001b|4C- Receipt -\n" );
// Set print area of Page Mode
printer.SetPageModePrintArea( "184,0,120,800" );
printer.PrintText( "    $ 299.99- \n", ESCPOSConst.CMP_ALIGNMENT_CENTER,
    ESCPOSConst.CMP_FNT_UNDERLINE | ESCPOSConst.CMP_FNT_BOLD,
    ESCPOSConst.CMP_TXT_4WIDTH | ESCPOSConst.CMP_TXT_4HEIGHT );
// Set print area of Page Mode
printer.SetPageModePrintArea( "88,0,88,560" );
printer.PrintText( "CITIZEN SYSTEMS\n", ESCPOSConst.CMP_ALIGNMENT_RIGHT,
    ESCPOSConst.CMP_FNT_DEFAULT, ESCPOSConst.CMP_TXT_2WIDTH |
    ESCPOSConst.CMP_TXT_3HEIGHT );
// Set print area of Page Mode
printer.SetPageModePrintArea( "0,0,88,480" );
printer.PrintBarcode( "123456789012", ESCPOSConst.CMP_BCS_UPCA, 64, 4,
    ESCPOSConst.CMP_ALIGNMENT_LEFT, ESCPOSConst.CMP_HRI_TEXT_BELOW );
// Set print area of Page Mode
printer.SetPageModePrintArea( "0,600,192,192" );
printer.PrintQRCode( "http://www.citizen-systems.co.jp/", 5,
    ESCPOSConst.CMP_QRCODE_EC_LEVEL_L,
    ESCPOSConst.CMP_ALIGNMENT_LEFT );
// End of Page Mode
printer.PageModePrint( ESCPOSConst.CMP_PM_NORMAL );
```

**Print image**

## 2.26. ClearPrintArea method

### Syntax

int ClearPrintArea ()

### Parameter

Not exist.

### Description

This method is used to clear the area defined by the PageModePrintArea property.

### Return value

Return CMP\_SUCCESS (0) in success. Please refer to "[2.1 Return value](#)" for the error code except it.

### Example

```
printer.ClearPrintArea();
```

## 2.27. ClearOutput method

### Syntax

int ClearOutput ()

### Parameter

Not exist.

### Description

This method is used to clear all buffered output data by [TranzactionPrint method](#) and [PageModePrint method](#).

Also, when possible, halts outputs that are in progress. At the same time, the command to clear print data on the printer is sent.

### Return value

Return CMP\_SUCCESS (0) in success. Please refer to "[2.1 Return value](#)" for the error code except it.

### Example

```
printer.ClearOutput();
```

## 2.28. PrintData method

### Syntax

```
int PrintData (byte[] data)
```

### Parameter

The meaning and the setting range of the parameters are as follows.

Value	[IN/OUT]	Meaning	Setting range
data	[IN]	Send data	

### Description

This method is used to send data bytes to the printer directly.

It is usually not necessary, please use if you want to send ESC commands directly to the printer.

If you want to use, please be careful so as not to affect the other methods.

### Return value

Return CMP\_SUCCESS (0) in success. Please refer to "[2.1 Return value](#)" for the error code except it.

### Example

```
// Sound the buzzer (The printer must support buzzer.)  
byte[] data = { 0x1b, 0x1e };  
printer.PrintData( data );
```



## 2.29. PrintNormal method

### Syntax

int PrintNormal (string data)

### Parameter

The meaning and the setting range of the parameters are as follows.

Value	[IN/OUT]	Meaning	Setting range
data	[IN]	Print data (Support OPOS escape sequence)	

### Description

This method is used to print using the escape sequences that are defined in the OPOS.

Please use this if you are familiar with the OPOS.

The supporting escape sequences in this SDK are as follows.

Please refer to specifications of OPOS for the details.

Escape Sequence		Notes
Paper cut	ESC #P	Partial cut (1-99), Full cut (0,100)
Feed and paper cut	ESC #fP	Partial cut (1-99), Full cut (0,100)
Bitmap print	ESC #B	1-20 (Bitmap image number that is stored in the flash memory of the printer) After Bitmap printing, print position returns to the initial state (left-justified).
Multi-line feed	ESC #IF	
Unit feed	ESC #uF	
Barcode print	ESC #R	
Font type specification	ESC #fT	
Bold	ESC bC	
Underline	ESC #uC	
Custom color	ESC #rC	Effective only when dedicated 2-color paper is used.
Red	ESC rC	Effective only when dedicated 2-color paper is used.
Reverse character	ESC rvC	
Standard	ESC 1C	
Double width	ESC 2C	
Double height	ESC 3C	
Quadruple	ESC 4C	
Horizontal magnification	ESC #hC	1-8
Vertical magnification	ESC #vC	1-8
Centering	ESC cA	
Right adjustment	ESC rA	
Normal	ESC N	

### Return value

Return CMP\_SUCCESS (0) in success. Please refer to "[2.1 Return value](#)" for the error code except it.

### Example

```
printer.PrintNormal( "\u001b|4C- Receipt -\n" );
```

## 2.30. GetVersionCode method

### Syntax

int GetVersionCode ()

### Parameter

Not exist.

### Description

This method is used to get a numerical value for the version number of this SDK.

### Return value

Return a numerical value for the version number of this SDK. (Ver1.00 is 100)

### Example

```
printer.GetVersionCode();
```

## 2.31. GetVersionName method

### Syntax

string GetVersionName ()

### Parameter

Not exist.

### Description

This method is used to get a string for the version number of this SDK.

### Return value

Return a string for the version number of this SDK. (Ver1.00 is "1.00")

### Example

```
printer.GetVersionName();
```

## 2.32. WatermarkPrint method

### Syntax

int WatermarkPrint (int start, int nvImageNumber, int pass, int feed, int repeat)

### Parameter

The meaning and the setting range of the parameters are as follows.

Value	[IN/OUT]	Meaning	Setting range
start	[IN]	The start / Stop of the watermark print	CMP_WM_START: The start of the watermark print CMP_WM_STOP: The stop of the watermark print
nvImageNumber	[IN]	The NV image number that is stored in the flash memory of the printer	1 - 20
pass	[IN]	The first start position (vertical direction) of the watermark	0 - 65,535 (dots) Expressed in the unit of measure given by <a href="#">MapMode</a> (default dots).
feed	[IN]	The blank length each watermark	0 - 65,535 (dots) Expressed in the unit of measure given by <a href="#">MapMode</a> (default dots).
repeat	[IN]	The print number of times of the watermark	0: Infinite repetition 1 - 65,535: The repetition number of times

### Description

This method is used to print watermark.

This is available with a printer of the CT-D151, CT-E651, CT-S251/601II/651II/801II/851II series.

The bitmap image stored in the flash memory of the printer is printed out as watermark.

To use this method, you need to register of the logo in advance. Logo registration, please store it using [setNVBitmap method](#) or use the "POS Printer utility" of utility software for the printer.

When the printing of watermark was stopped in CMP\_WM\_STOP, all other arguments are ignored

### Return value

Return CMP\_SUCCESS (0) in success. Please refer to "[2.1 Return value](#)" for the error code except it.

### Example

```
printer.WatermarkPrint( ESCPOSConst.CMP_WM_START, 1, 0, 0, 0 );
```

## 2.33. SearchCitizenPrinter method

### Syntax

CitizenPrinterInfo[] seachCitizenPrinter (int connectType, int serchTime, out int result)

### Parameter

The meaning and the setting range of the parameters are as follows.

Value	[IN/OUT]	Meaning	Setting range
connectType	[IN]	Connect type	CMP_PORT_WiFi CMP_PORT_USB CMP_PORT_COM CMP_PORT_LPT CMP_PORT_Bluetooth
serchTime	[IN]	Search time (sec)	0: Get paired address in the case of CMP_PORT_Bluetooth. 1 - 30: Search for a specified time.
result	[OUT]	Error code	

Return CMP\_SUCCESS (0) to result in success. Please check the description of the error codes below in the case of failure. Please refer to "[2.1 Return value](#)" for the error code except it.

Error codes	Description
CMP_E_ILLEGAL (1101)	Invalid parameter. (1) The connect type is unsupported. (2) The search time is out of range.
CMP_E_NO_LIST (1106)	As a result of search, the printer cannot be found.

### Description

This method is used to search the printer and to obtain the list of the printer information. Please specify the type of the printer connection and the search time. After search time passed, set a result to the result parameter and return the information of the found printers as array type.

In the case of CMP\_PORT\_WiFi for the connection type, you can't search the printers of CMP-20/30 series. Recommended value of search time is more than 3 seconds. When the search time is shorter than the second, a search may fail by the network situation.

In the case of CMP\_PORT\_USB for the connection type, you can search the printer of CITIZEN connected to the terminal. It does not depend on the setting of searchTime, and the search is finished immediately.

In the case of CMP\_PORT\_COM or CMP\_PORT\_LPT for the connection type, you can search the available ports. It does not depend on the setting of searchTime, and the search is finished immediately.

In the case of CMP\_PORT\_Bluetooth for the connection type, you can get the paired address when specifying 0 for the search time. When specifying 1 - 30 for the search time you can get the connectable address. Recommended value of search time is more than 10 seconds. When the search time is shorter than the second, a search may fail by the Bluetooth situation.

### Return value

Return the list of the information of the printers when a search succeeded. When a search fails, return the empty list.

The list of information of the printer is stored as a CitizenPrinterInfo-type, and available information varies according to connectType parameter.

Connect Type	CitizenPrinterInfo	Information to be obtained
CMP_PORT_WiFi	ipAddress	IP Address
	macAddress	MAC Address
	bdAddress	(Empty character)
	deviceName	(Empty character)
	printerModel	(Empty character)
CMP_PORT_USB	ipAddress	(Empty character)
	macAddress	(Empty character)
	bdAddress	(Empty character)
	deviceName	USB interface port name
	printerModel	Printer model name
CMP_PORT_COM CMP_PORT_LPT	ipAddress	(Empty character)
	macAddress	(Empty character)
	bdAddress	(Empty character)
	deviceName	Port name
	printerModel	(Empty character)
CMP_PORT_Bluetooth	ipAddress	(Empty character)
	macAddress	(Empty character)
	bdAddress	Bluetooth device address
	deviceName	Bluetooth device name
	printerModel	(Empty character)

**Example**

```

int errCode;
CitizenPrinterInfo[] list = printer.SearchCitizenPrinter(
    ESCPOSConst.CMP_PORT_WiFi, 3, out errCode)
for (int i = 0; i < list.Length; i++)
{
    Debug.WriteLine("IP Address: " + list[i].ipAddress);
    Debug.WriteLine("MAC Address: " + list[i].macAddress);
}

```

## 2.34. SearchESCPOSPrinter method

### Syntax

string[] seachESCPOSPrinter (int connectType, int serchTime, out int result)

### Parameter

The meaning and the setting range of the parameters are as follows.

Value	[IN/OUT]	Meaning	Setting range
connectType	[IN]	Connect type	CMP_PORT_WiFi CMP_PORT_USB CMP_PORT_COM CMP_PORT_LPT CMP_PORT_Bluetooth
serchTime	[IN]	Search time (sec)	0: Get paired address in the case of CMP_PORT_Bluetooth. 1 - 30: Search for a specified time.
result	[OUT]	Error code	

Return CMP\_SUCCESS (0) to result in success. Please check the description of the error codes below in the case of failure. Please refer to "[2.1 Return value](#)" for the error code except it.

Error codes	Description
CMP_E_ILLEGAL (1101)	Invalid parameter. (1) The connect type is unsupported. (2) The search time is out of range.
CMP_E_NO_LIST (1106)	As a result of search, the printer cannot be found.

### Description

This method is used to search the printer and to obtain the list of the addresses. Please specify the type of the printer connection and the search time. After search time passed, set a result to the result parameter and return the addresses of the found printers as String array type.

In the case of CMP\_PORT\_WiFi for the connection type, you can't search the printers of CMP-20/30 series. Recommended value of search time is more than 3 seconds. When the search time is shorter than the second, a search may fail by the network situation.

In the case of CMP\_PORT\_USB for the connection type, you can search the printer of CITIZEN connected to the terminal. It does not depend on the setting of searchTime, and the search is finished immediately.

In the case of CMP\_PORT\_COM or CMP\_PORT\_LPT for the connection type, you can search the available ports. It does not depend on the setting of searchTime, and the search is finished immediately.

In the case of CMP\_PORT\_Bluetooth for the connection type, you can get the paired address when specifying 0 for the search time. When specifying 1 - 30 for the search time you can get the connectable address. Recommended value of search time is more than 10 seconds. When the search time is shorter than the second, a search may fail by the Bluetooth situation.

### Return value

Return the list of addresses of the printers when a search succeeded. When a search fails, return the empty list.

### Example

```
int errCode;
string[] list = printer.SearchESCPOSPrinter(
    ESCPOSConst.CMP_PORT_WiFi, 3, out errCode );
```

## 2.35. SetIPSettings method

### Syntax

```
int SetIPSettings (string macAddress, bool enableDHCP, string ipAddress, string subnetMask,
                  string defaultGateway)
```

### Parameter

The meaning and the setting range of the parameters are as follows.

Value	[IN/OUT]	Meaning	Setting range
macAddress	[IN]	Mac address	00:00:00:00:00:00 – FF:FF:FF:FF:FF:FF
enableDHCP	[IN]	Enable DHCP	true or false
ipAddress	[IN]	IP address	0.0.0.0 - 255.255.255.255 or null
subnetMask	[IN]	Subnet mask	0.0.0.0 - 255.255.255.255 or null
defaultGateway	[IN]	Default gateway	0.0.0.0 - 255.255.255.255 or null

### Description

This method is used to set DHCP, IP address, Subnet mask and Default gateway.

This function is only available in a state in which the printer is connected via a network interface.

This function cannot be changed DHCP of IF1-ESxx interface.

### Return value

Return CMP\_SUCCESS (0) in success. Please refer to ["2.1 Return value"](#) for the error code except it.

### Example

```
printer.SetIPSettings (
    "00:0D:AC:10:00:10",
    false,
    "192.168.182.100",
    "255.255.255.0",
    "192.168.182.1" );
```



## 2.36. PrinterCheckEx method

### Syntax

- 1) int PrinterCheckEx (out int status, int connectType, string addr)
- 2) int PrinterCheckEx (out int status, int connectType, string addr, int port)
- 3) int PrinterCheckEx (out int status, int connectType, string addr, int port, int timeout)

### Parameter

The meaning and the setting range of the parameters are as follows.

Value	[IN/OUT]	Meaning	Setting range
status	[OUT]	Status codes	
connectType	[IN]	Connect type	CMP_PORT_WiFi CMP_PORT_USB CMP_PORT_COM CMP_PORT_LPT CMP_PORT_Bluetooth
addr	[IN]	IP address to connect or USB interface port (Virtual printer port for USB) or COM/LPT port or Bluetooth device address.	WiFi: 0.0.0.0 - 255.255.255.255 USB: USB001 - COM: COM1: - LPT: LPT1: - Bluetooth: 00:00:00:00:00:00 - FF:FF:FF:FF:FF:FF
port	[IN]	Connection port number	
timeout	[IN]	Timeout (msec)	

\* The acquisition of CMP\_STS\_BATTERY\_LOW and CMP\_STS\_MSR\_READ for CMP-20/30 does not support.

### Description

This method is used to connect printer and get the status of the printer. After the process is complete, disconnect the connection.

If the acquisition of the status is successful, set the following status code to the status parameters in the logical sum.

Status codes	Description
CMP_STS_NORMAL (0)	The printer is normal.
CMP_STS_DRAWER_LEVEL_H (2)	Status of pin 3 of drawer kick-out connector = H (when the type parameter is set)
CMP_STS_PAPER_NEAREMPTY (4)	Paper near empty. (when the type parameter is set)
CMP_STS_COVER_OPEN (16)	The cover of the printer opens.
CMP_STS_PAPER_EMPTY (32)	The printer is out of paper.
CMP_STS_PRINTEROFF (128)	The printer is off-line.

### Return value

Return CMP\_SUCCESS (0) in success. Please check the description of the error codes below in the case of failure. Please refer to "[2.1 Return value](#)" for the error code except it.

Error codes	Description
CMP_E_NOTCONNECT (1003)	Failed connection to the printer. (1) The printer is under none-connection status. (2) The printer is not turned ON. (3) Cannot obtain handle of interface board.
CMP_E_CONNECT_NOTFOUND	Failed to check the support model after connecting to the printer.

(1004)	(1) The model is not supported.
CMP_E_USB_BIDIRECTIONAL (1010)	The status feature of the Windows driver is enabled. "Enable bi-directional support" is on in the Port setting. (Please refer to "Installation of the Windows driver" of " <a href="#">1.2 System summary</a> ")

**Example**

```

int status;
int result = printer.PrinterCheckEx(out status, ESCPOSConst.CMP_PORT_WiFi,
                                   "192.168.182.100");
if ( ESCPOSConst.CMP_SUCCESS == result ) {
    if ( ESCPOSConst.CMP_STS_NORMAL == status ) {
        // Status Normal
    } else {
        if ( (ESCPOSConst.CMP_STS_COVER_OPEN & status) > 0 ) {
            // Cover Open
        }
        if ( (ESCPOSConst.CMP_STS_PAPER_EMPTY & status) > 0 ) {
            // Paper Empty
        }
        if ( (ESCPOSConst.CMP_STS_PRINTEROFF & status) > 0 ) {
            // Printer Offline
        }
        if ( (ESCPOSConst.CMP_STS_PAPER_NEAREMPTY & status) > 0 ) {
            // Paper Near Empty
        }
        if ( (ESCPOSConst.CMP_STS_DRAWER_LEVEL_H & status) > 0 ) {
            // Status of pin 3 of drawer kick-out connector = H
        }
    }
} else {
    // PrinterCheckEx Error
}

```

## 2.37. OpenDrawerEx method

### Syntax

- 1) int OpenDrawerEx (int drawer, int pulseLen, int connectType, string addr)
- 2) int OpenDrawerEx (int drawer, int pulseLen, int connectType, string addr, int port)
- 3) int OpenDrawerEx (int drawer, int pulseLen, int connectType, string addr, int port, int timeout)

### Parameter

The meaning and the setting range of the parameters are as follows.

Value	[IN/OUT]	Meaning	Setting range
drawer	[IN]	Cash drawer number	CMP_DRAWER_1: Drawer 1 CMP_DRAWER_2: Drawer 2
pulseLen	[IN]	Signal length	1 - 8 (x 100) msec
connectType	[IN]	Connect type	CMP_PORT_WiFi CMP_PORT_USB CMP_PORT_COM CMP_PORT_LPT CMP_PORT_Bluetooth
addr	[IN]	IP address to connect or USB interface port (Virtual printer port for USB) or COM/LPT port or Bluetooth device address.	WiFi: 0.0.0.0 - 255.255.255.255 USB: USB001 - COM: COM1: - LPT: LPT1: - Bluetooth: 00:00:00:00:00:00 - FF:FF:FF:FF:FF:FF
port	[IN]	Connection port number	
timeout	[IN]	Timeout (msec)	

### Description

This method is used to connect printer and open the cash drawer is connected to the printer. After the process is complete, disconnect the connection.

This method can execute even if the printer error (cover open or paper empty).

### Return value

Return CMP\_SUCCESS (0) in success. Please check the description of the error codes below in the case of failure. Please refer to ["2.1 Return value"](#) for the error code except it.

Error codes	Description
CMP_E_NOTCONNECT (1003)	Failed connection to the printer. (1) The printer is under none-connection status. (2) The printer is not turned ON. (3) Cannot obtain handle of interface board.
CMP_E_CONNECT_NOTFOUND (1004)	Failed to check the support model after connecting to the printer. (1) The model is not supported.
CMP_E_USB_BIDIRECTIONAL (1010)	The status feature of the Windows driver is enabled. "Enable bi-directional support" is on in the Port setting. (Please refer to "Installation of the Windows driver" of <a href="#">"1.2 System summary"</a> )

### Example

```
printer.OpenDrawerEx(ESCPOSConst.CMP_DRAWER_1, 1,
                    ESCPOSConst.CMP_PORT_WiFi, "192.168.182.100");
```

## 2.38. SetLog method

### Syntax

```
void SetLog (int mode, string path, int maxSize)
```

### Parameter

The meaning and the setting range of the parameters are as follows.

Value	[IN/OUT]	Meaning	Setting range
mode	[IN]	Log mode	0: No Record 1: Recording of access history 2: Error only record
path	[IN]	Store folder	
maxSize	[IN]	Log size	0: No size limit 1 - : Maximum size (MB)

### Description

This method is used to set the log function. Please refer to "[3.2 Log function](#)" for details of the log function.

### Return value

Not exist.

### Example

```
printer.SetLog( 1, "C:\\Log", 10 );
```

## 2.39. PageModeArea property

### Syntax

string PageModeArea

### Attribute

Read only

### Description

This property holds the page area. Expressed in the unit of measure given by [MapMode](#) (default dots). The string consists of two ASCII numbers separated by a comma, in the following order: horizontal size, vertical size.

This page area is determined by the hardware capability of the printer.

[CT-S251 Series] : "432,1662"

[CT-S281 Series] : "384,938"

[CT-D150/151,CT-E351/651,CT-S310II/601/651/801/851/601II/651II/801II/851II/2000 Series] :  
"576,1662"

[CT-S4000 Series] : "832,1662"

[CMP-20 Series] : "384,938"

[CMP-30 Series] : "576,938"

For example, if the string is "384,938", then the page size is 384 horizontal units by 938 vertical units, and the station print area is a rectangle beginning at the top left point (0,0), and continuing up to the bottom right point (383,937).

The Connect method must be complete before accessing this property. This property is set in Connect method.

### Set property

Not exist.

### Get property

String GetPageModeArea()

Returns the page area as the return value.

## 2.40. PageModePrintArea property

### Syntax

string PageModePrintArea

### Attribute

Read/Write

### Description

This property holds the print area of Page Mode. Expressed in the unit of measure given by [MapMode](#) (default dots). The maximum print area is the page area.

The string consists of four ASCII numbers separated by commas, in the following order: horizontal start, vertical start, horizontal size, vertical size.

Text written to the right edge of the print area will wrap to the next line. Any text or image written beyond the bottom of the print area will be truncated.

For example, if the string is "50,100,200,400", then the station print area is a rectangle beginning at the point (50,100), and continuing up to the point (249,499).

The Connect method must be complete before accessing this property. This property is initialized to "0,0,0,0" at Connect method.

### Set property

int SetPageModePrintArea (String area)

Please specify the property value that you want to set in the parameter.

Return CMP\_SUCCESS (0) in success. Please refer to "[2.1 Return value](#)" for the error code except it.

### Get property

String GetPageModePrintArea ()

Returns the Page Mode print area that is set as the return value.

## 2.41. PageModePrintDirection property

### Syntax

int PageModePrintDirection

### Attribute

Read/Write

### Description

This property holds the print direction of the Page Mode print area. The print direction values are as follows.

Value	Meaning
CMP_PD_LEFT_TO_RIGHT	Print left to right, starting at top left position of the print area, i.e., normal printing.
CMP_PD_BOTTOM_TO_TOP	Print bottom to top, starting at the bottom left position of the print area, i.e., rotated left 90° printing.
CMP_PD_RIGHT_TO_LEFT	Print right to left, starting at the bottom right position of the print area, i.e., upside down printing.
CMP_PD_TOP_TO_BOTTOM	Print top to bottom, starting at the top right position of the print area, i.e., rotated right 90° printing.

Setting this property may also change PageModeHorizontalPosition and PageModeVerticalPosition. Setting this property will have an effect on the current print area. By changing the print area, it is possible to generate a receipt or slip with text printed in multiple rotations.

The Connect method must be complete before accessing this property. This property is initialized to CMP\_PD\_LEFT\_TO\_RIGHT at Connect method.

### Set property

int SetPageModePrintDirection (int direction)

Please specify the property value that you want to set in the parameter.

Return CMP\_SUCCESS (0) in success. Please refer to "[2.1 Return value](#)" for the error code except it.

### Get property

int GetPageModePrintDirection ()

Returns the print direction of Page Mode print area that is set as the return value.

## 2.42. PageModeHorizontalPosition property

### Syntax

int PageModeHorizontalPosition

### Attribute

Read/Write

### Description

This property holds the horizontal start position offset within the Page Mode print area. Expressed in the unit of measure given by [MapMode](#) (default dots).

The horizontal direction is the same as the actual PageModePrintDirection property.

A read/get on this property will return the horizontal position offset set by the last write/set and not the current position.

The Connect method must be complete before accessing this property. This property is initialized to zero (0) at Connect method.

### Set property

int SetPageModeHorizontalPosition (int position)

Please specify the property value that you want to set in the parameter.

Return CMP\_SUCCESS (0) in success. Please refer to "[2.1 Return value](#)" for the error code except it.

### Get property

int GetPageModeHorizontalPosition ()

Returns the horizontal position of Page Mode print area that is set as the return value.



## 2.43. PageModeVerticalPosition property

### Syntax

int PageModeVerticalPosition

### Attribute

Read/Write

### Description

This property holds the vertical start position offset within the Page Mode print area. Expressed in the unit of measure given by [MapMode](#) (default dots).

The vertical direction is perpendicular to the direction specified in the actual PageModePrintDirection property.

A read/get on this property will return the vertical position offset set by the last write/set and not the current position.

The Connect method must be complete before accessing this property. This property is initialized to zero (0) at Connect method.

### Set property

int SetPageModeVerticalPosition (int position)

Please specify the property value that you want to set in the parameter.

Return CMP\_SUCCESS (0) in success. Please refer to "[2.1 Return value](#)" for the error code except it.

### Get property

int GetPageModeVerticalPosition ()

Returns the vertical position of Page Mode print area that is set as the return value.

## 2.44. RecLineSpacing property

### Syntax

int RecLineSpacing

### Attribute

Read/Write

### Description

This property holds the spacing of each single-high print line, including both the printed line height plus the whitespace between each pair of lines. Expressed in the unit of measure given by [MapMode](#) (default dots).

Depending upon the current line spacing, a multi-high print line might exceed this value. In this case the whitespace is zero.

The Connect method must be complete before accessing this property. This property is initialized to 34 at Connect method.

### Set property

int SetRecLineSpacing (int spacing)

Please specify the property value that you want to set in the parameter.

Return CMP\_SUCCESS (0) in success. Please refer to "[2.1 Return value](#)" for the error code except it.

### Get property

int GetRecLineSpacing ()

Returns the spacing of each single-high print line that is set as the return value.

## 2.45. MapMode property

### Syntax

int MapMode

### Attribute

Read/Write

### Description

This property holds the mapping mode of the printer. The mapping mode defines the unit of measure used for other properties, such as line heights and line spacing. The map mode values are as follows.

Value	Meaning
CMP_MM_DOTS	The printer's dot width.
CMP_MM_TWIPS	1/1440 of an inch.
CMP_MM_ENGLISH	0.001 inch.
CMP_MM_METRIC	0.01 millimeter.

The method and the properties to be affected by the MapMode property are as follows.

[PrintBitmap method](#) : width, alignment  
[SetNVBitmap method](#) : width  
[PrintBarcode method](#) : height, width, alignment  
[PrintPDF417 method](#) : moduleWidth, alignment  
[PrintQRCode method](#) : moduleSize, alignment)  
[PrintGS1DataBarStacked method](#) : moduleSize, maxSize, alignment  
[UnitFeed method](#) : ufCount  
[WatermarkPrint method](#) : pass, feed  
[PageModeArea property](#)  
[PageModePrintArea property](#)  
[PageModeHorizontalPosition property](#)  
[PageModeVerticalPosition property](#)  
[RecLineSpacing property](#)

The Connect method must be complete before accessing this property. This property is initialized to CMP\_MM\_DOTS at Connect method.

### Set property

int SetMapMode (int mode)

Please specify the property value that you want to set in the parameter.

Return CMP\_SUCCESS (0) in success. Please refer to "[2.1 Return value](#)" for the error code except it.

### Get property

int GetMapMode ()

Returns the mapping mode that is set as the return value.

### Example

```
printer.SetMapMode( ESCPOSConst.CMP_MM_DOTS );
printer.UnitFeed( 200 );                      // 200 dots feed
printer.SetMapMode( ESCPOSConst.CMP_MM_METRIC );
printer.UnitFeed( 2500 );                     // 25 millimeter feed
```

## 3. Notes

Notes of this SDK are as follows.

### 3.1. Function to detect the completion of printing

In this SDK, after the printing output, the SDK waits for the printing completion reply from a printer and judge the success / failure of the method.

The function to detect the completion of printing is processed in the following cases.

- (1) At the time of completion of transaction processing (TransactionPrint method)
- (2) At the time of completion of page mode (PagePrint method)
- (3) At the time of data output of the methods except during the buffering process in transaction or page mode

The function to detect the completion of printing need a few time to wait for the response of the printer. If you want to print continuously multiple methods, smooth printing is possible by using transaction processing. (TransactionPrint method)

### 3.2. Log function

This SDK supports the log function which records the methods and properties. When setting the log function, use the [SetLog method](#), or please place configuration file "CSJPOSLib.cfg" of the next format in the folder same as a library.

<Example of CSJPOSLib.cfg>

[LogSetting]	... Section name (Fixed)
LogMode=1	... Specifies the log mode.
LogPath=C:\Log	... Specifies the folder to store the log files.
LogMaxSize=10	... Specifies the maximum size of log file in MB.

#### Setting items

- Log mode
  - Specifies the mode for recording the log.
  - 0: No Record
  - 1: Recording of access history
  - 2: Error only record
- Store folder
  - Specifies a folder which log files will be stored. When this setting is not appointed, it will be stored in the current folder.
- Log size
  - Specifies maximum size of log file in MB. If 0 is specified, log data will be recorded without limit.

#### Log file name

The extension of log files is ".log". In the file name, a numeric character which means the day of week is followed to "CSJPOSLib". The numeric character is from 0 to 6. "0" means Sunday, "1" means Monday.

Example: CSJPOSLib\_1.log

The log file already exists and if it is older than today, the log file is deleted and the log data will be recorded into a new file. (Maximum hold one week of recording)

### Log format

The log function records a date, a time, a result of the methods and properties.

--- Example 1 of method (Connect) ---

```
2016/03/08 12:48:45.122 4268 001 METHOD call   Connect(0, "192.168.10.100")
2016/03/08 12:48:46.151 4268 001 METHOD result Connect() -> Success(0)
```

--- Example 2 of method (PrintText) ---

```
2016/03/08 12:51:35.803 4268 001 METHOD call   PrintText([See below], 1, 1, 0)
-----Parameter Detail-----
Print text 1
Print text 2
-----
2016/03/08 12:51:36.099 4268 001 METHOD result PrintText() -> Success(0)
```

--- Example to set to properties ---

```
2016/03/08 13:00:23.021 4268 001 PROPERTY set   RecLineSpacing <- 24 : Success(0)
```

--- Example to get from properties ---

```
2016/03/08 13:00:23.037 4268 001 PROPERTY get   RecLineSpacing -> 24
```

- \* When the logging function is active, performance of the SDK will not be comfortable because a log file will be updated at every method and property accessing.
- \* Because of the following reasons or else, log data will not be stored without any notification.
  - A folder in write-protected device (such as CD-ROM, write-protected SD card) is specified.
  - A folder or file without permission is specified.
  - Write-protected log file already exists.
  - Another program (such as a text editor) is using (locking) the log file.
  - There is not enough space to store log data in the device.

### 3.3. Predefined Constants List

No	Type	Name	Data type	Value	Description
1	Result/Error	CMP_SUCCESS	int	0	Successfully completed
		CMP_E_CONNECTED	int	1001	Already connected
		CMP_E_DISCONNECT	int	1002	Not connected
		CMP_E_NOTCONNECT	int	1003	Failed to connect
		CMP_E_CONNECT_NOTFOUND	int	1004	Non supported model
		CMP_E_CONNECT_OFFLINE	int	1005	Failed printer status
		CMP_E_USB_BIDIRECTIONAL	int	1010	"Enable bidirectional support" option in Windows driver is enabled
		CMP_E_ILLEGAL	int	1101	Unsupported or invalid parameter
		CMP_E_OFFLINE	int	1102	Off-line
		CMP_E_NOEXIST	int	1103	File does not exist
		CMP_E_FAILURE	int	1104	Process failure
		CMP_E_TIMEOUT	int	1105	Timeout
		CMP_E_NO_LIST	int	1106	Printer cannot be found
		CMP_EPTR_COVER_OPEN	int	1201	Cover opens
		CMP_EPTR_REC_EMPTY	int	1202	Out of paper
		CMP_EPTR_BADFORMAT	int	1203	Unsupported file format
		CMP_EPTR_CMP_EPTR_TOOBIG	int	1204	Bitmap size too big
2	Connection interface	CMP_PORT_WiFi	int	0	Network
		CMP_PORT_Bluetooth	int	1	Bluetooth
		CMP_PORT_USB	int	3	USB
		CMP_PORT_COM	int	4	Serial
		CMP_PORT_LPT	int	5	Parallel
3	Serial communication condition	CMP_COM_BAUDRATE_1200	int	1200	Baud rate : 1200
		CMP_COM_BAUDRATE_2400	int	2400	Baud rate : 2400
		CMP_COM_BAUDRATE_4800	int	4800	Baud rate : 4800
		CMP_COM_BAUDRATE_9600	int	9600	Baud rate : 9600
		CMP_COM_BAUDRATE_19200	int	19200	Baud rate : 19200
		CMP_COM_BAUDRATE_38400	int	38400	Baud rate : 38400
		CMP_COM_BAUDRATE_57600	int	57600	Baud rate : 57600
		CMP_COM_BAUDRATE_115200	int	115200	Baud rate : 115200
		CMP_COM_PARITY_NONE	int	0	Parity : NONE
		CMP_COM_PARITY_ODD	int	1	Parity : ODD
		CMP_COM_PARITY_EVEN	int	2	Parity : EVEN
		CMP_COM_HANDSHAKE_DTRDSR	int	0	Flow control : DTR/DSR
		CMP_COM_HANDSHAKE_XONXOFF	int	1	Flow control : XON/XOFF
4	Status	CMP_STS_NORMAL	int	0	Normal
		CMP_STS_DRAWER_LEVEL_H	int	2	Status of pin 3 of drawer kick-out connector = H
		CMP_STS_PAPER_NEAREMPTY	int	4	Paper near empty
		CMP_STS_BATTERY_LOW	int	8	battery capacity low
		CMP_STS_COVER_OPEN	int	16	Cover opens
		CMP_STS_PAPER_EMPTY	int	32	Paper empty
		CMP_STS_MSR_READ	int	64	Currently MSR read mode
		CMP_STS_PRINTEROFF	int	128	Off-line
5	Alignment	CMP_ALIGNMENT_LEFT	int	0	Left alignment
		CMP_ALIGNMENT_CENTER	Int	1	Center alignment

6	Text attribute	CMP_ALIGNMENT_RIGHT	int	2	Right alignment
		CMP_FNT_DEFAULT	int	0	Default font
		CMP_FNT_FONTB	int	1	Font B
		CMP_FNT_FONTC	int	2	Font C
		CMP_FNT_BOLD	int	8	Bold
		CMP_FNT_REVERSE	int	16	Reverse
		CMP_FNT_UNDERLINE	int	128	Underline
		CMP_FNT_ITALIC	int	256	Italic
7	Text size	CMP_FNT_STRIKEOUT	int	512	Strikeout
		CMP_TXT_1WIDTH	int	0	1 times width
		CMP_TXT_2WIDTH	int	16	2 times width
		CMP_TXT_3WIDTH	int	32	3 times width
		CMP_TXT_4WIDTH	int	48	4 times width
		CMP_TXT_5WIDTH	int	64	5 times width
		CMP_TXT_6WIDTH	int	80	6 times width
		CMP_TXT_7WIDTH	int	96	7 times width
		CMP_TXT_8WIDTH	int	112	8 times width
		CMP_TXT_1HEIGHT	int	0	1 times height
		CMP_TXT_2HEIGHT	int	1	2 times height
		CMP_TXT_3HEIGHT	int	2	3 times height
		CMP_TXT_4HEIGHT	int	3	4 times height
		CMP_TXT_5HEIGHT	int	4	5 times height
		CMP_TXT_6HEIGHT	int	5	6 times height
		CMP_TXT_7HEIGHT	int	6	7 times height
		CMP_TXT_8HEIGHT	int	7	8 times height
8	Side	CMP_SIDE_RIGHT	int	0	Right side
		CMP_SIDE_LEFT	int	1	Left side
9	Bitmap width	CMP_BM_ASIS	int	-11	One bitmap pixel per printer dot
10	Bitmap mode	CMP_BM_MODE_CMD_RASTER	int	1	Monochrome print (Raster command)
		CMP_BM_MODE_CMD_BITIMAGE	int	2	Monochrome print (Bit image command)
		CMP_BM_MODE_CMD_MONO	int	8	Monochrome register
		CMP_BM_MODE_CMD_GRAY16	int	8	Grayscale print/ register
		CMP_BM_MODE_HT_THRESHOLD	int	16	Halftone (Threshold)
		CMP_BM_MODE_HT_DITHER	int	32	Halftone (Dither)
11	Barcode symbology	CMP_BCS_UPCA	int	101	UPC-A
		CMP_BCS_UPCE	int	102	UPC-E
		CMP_BCS_EAN8	int	103	EAN8
		CMP_BCS_EAN13	int	104	EAN13
		CMP_BCS_JAN8	int	105	JAN8
		CMP_BCS_JAN13	int	106	JAN13
		CMP_BCS_ITF	int	107	Interleaved 2 of 5
		CMP_BCS_Codabar	int	108	Codabar
		CMP_BCS_Code39	int	109	Code30
		CMP_BCS_Code93	int	110	Code93
		CMP_BCS_Code128	int	111	Code128
		CMP_BCS_GS1DATABAR	int	131	GS1 DataBar Omnidirectional
		CMP_BCS_GS1DATABAR_E	int	132	GS1 DataBar Expanded
		CMP_BCS_GS1DATABAR_S	int	133	GS1 DataBar Stacked
		CMP_BCS_GS1DATABAR_E_S	int	134	GS1 DataBar Expanded Stacked
		CMP_BCS_GS1DATABAR_T	int	135	GS1 DataBar Truncated
		CMP_BCS_GS1DATABAR_L	int	136	GS1 DataBar Limited

		CMP_BCS_GS1DATABAR_S_O	int	137	GS1 DataBar Stacked Omnidirectional
12	HRI characters	CMP_HRI_TEXT_NONE	int	0	None
		CMP_HRI_TEXT_ABOVE	int	1	Above the barcode
		CMP_HRI_TEXT_BELOW	int	2	Below the barcode
13	Error correction level (PDF417)	CMP_PDF417_EC_LEVEL_0	int	48	Level 0
		CMP_PDF417_EC_LEVEL_1	int	49	Level 1
		CMP_PDF417_EC_LEVEL_2	int	50	Level 2
		CMP_PDF417_EC_LEVEL_3	int	51	Level 3
		CMP_PDF417_EC_LEVEL_4	int	52	Level 4
		CMP_PDF417_EC_LEVEL_5	int	53	Level 5
		CMP_PDF417_EC_LEVEL_6	int	54	Level 6
		CMP_PDF417_EC_LEVEL_7	int	55	Level 7
		CMP_PDF417_EC_LEVEL_8	int	56	Level 8
14	Error correction level (QR Code)	CMP_QRCODE_EC_LEVEL_L	int	48	Level L (7%)
		CMP_QRCODE_EC_LEVEL_M	int	49	Level M (15%)
		CMP_QRCODE_EC_LEVEL_Q	int	50	Level Q (25%)
		CMP_QRCODE_EC_LEVEL_H	int	51	Level H (30%)
15	Cut type	CMP_CUT_FULL	int	-1	Full cut
		CMP_CUT_PARTIAL	int	-2	Partial cut
		CMP_CUT_FULL_PREFEED	int	-3	Feed and full cut
		CMP_CUT_PARTIAL_PREFEED	int	-4	Feed and partial cut
16	Mark feed type	CMP_MF_TO_CUTTER	int	2	Feed and cut
		CMP_MF_TO_NEXT_TOF	int	8	Feed to the next top
17	Drawer number	CMP_DRAWER_1	int	1	Drawer 1
		CMP_DRAWER_2	int	2	Drawer 2
18	Transaction control	CMP_TP_TRANSACTION	int	11	Begin transaction
		CMP_TP_NORMAL	int	12	End transaction
19	Rotation control	CMP_RT_NORMAL	int	0x0001	End rotation
		CMP_RT_ROTATE180	int	0x0103	Begin upside-down rotation
		CMP_RP_BARCODE	int	0x1000	Begin barcode rotation
		CMP_RP_BITMAP	int	0x2000	Begin bitmap rotation
20	Page mode control	CMP_PM_PAGE_MODE	int	1	Begin page mode
		CMP_PM_PRINT_SAVE	int	2	Print and save canvas
		CMP_PM_NORMAL	int	3	Print and exit page mode
		CMP_PM_CANCEL	int	4	Cancel page mode
21	Page mode direction	CMP_PD_LEFT_TO_RIGHT	int	1	Normal printing
		CMP_PD_BOTTOM_TO_TOP	int	2	Rotated left 90° printing
		CMP_PD_RIGHT_TO_LEFT	int	3	Upside down printing
		CMP_PD_TOP_TO_BOTTOM	int	4	Rotated right 90° printing
22	Watermark control	CMP_WM_STOP	int	0	End watermark
		CMP_WM_START	int	1	Begin watermark
23	Map mode type	CMP_MM_DOTS	int	1	The printer's dot width
		CMP_MM_TWIPS	int	2	1/1440 of an inch
		CMP_MM_ENGLISH	int	3	0.001 inch
		CMP_MM_METRIC	int	4	0.01 millimeter



CITIZEN Windows POS Print SDK - Programming Manual

May 8, 2017 For Ver. 1.06

CITIZEN SYSTEMS JAPAN CO., LTD.

<http://www.citizen-systems.co.jp/>