

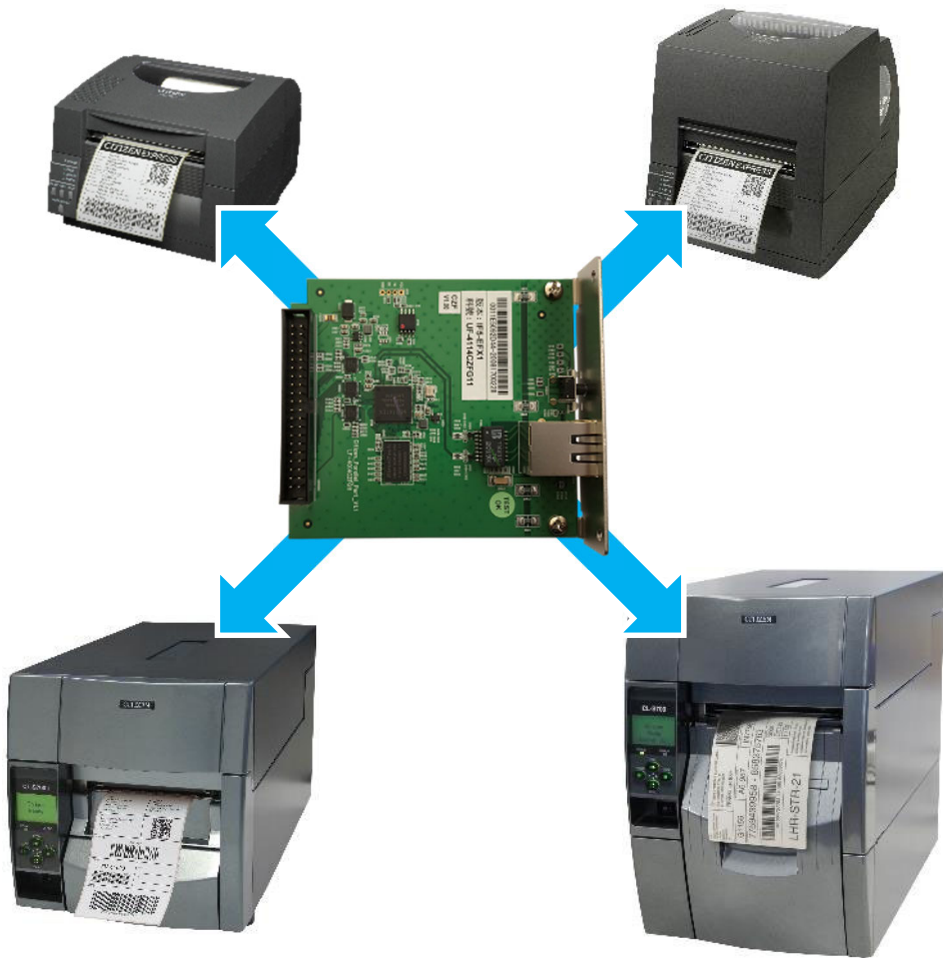
CITIZEN

New Network Cards

CL-S521II, CL-S621II

CL-S700II series

- And 300 dpi versions
- And Type 1 versions
 - CL-S521, CL-S621, CL-S700



Overview

Old and New Part Numbers

Old Part Number	Description	New Part Number
2000432	Compact LAN card	PPS00488S
2000414	Premium Ethernet LAN card Multi-pack packaging	IF5-ES04
2000405	Premium Ethernet LAN card Single box packaging	2000405 Using existing p/n
2000406	Wireless LAN WiFi card	IF5-WF5L IF5-WF5S

New **Premium** LAN

IF5-ES04



Old part numbers:
 2000414, 2000405 CSE
 OPT-788-N CSA

Field upgradable to WiFi
 by adding Citizen
 Wireless dongle:
 UPG-WF5S or UPG-WF5L

	Old board	New IF5-ES04
Branding on User Interface	PrintServer	LinkServer™
LAN speed	Up to 100 Mbps	Up to 1000 Mbps (1Gbps)
Board speed		x10 faster
WiFi upgradable	No	Yes

New Premium WiFi

IF5-WF5x

IF5-WF5L

Long range,
high-gain antenna



IF5-WF5S

Standard antenna

Old part numbers:

2000406 CSE

OPT-797 (+801, 802) CSA

	Old board	New IF5-WF5x
Branding on UI	PrintServer	LinkServer™
LAN speed	No LAN	Up to 1000 Mbps (1Gbps)
WiFi frequencies	2.4 Ghz	2.4 + 5.0 Ghz
Aerial type	Compact	Compact + Long Range
WiFi Site Scan	No	Yes
Encryption standards	Limited to older protocols	Wide ranging, newest protocols, expandable

New Compact LAN

IF5-EFX1 (model number)

PPS00488S (part number)



Old part numbers:
2000432 CSE

New Part Number
PPS00488S CSE

	Old board	New IF5-EFX1
LAN speed	Up to 100 Mbps	Up to 1000 Mbps (1Gbps)
User interface	Basic settings only	Full menus and configuration
Access control	No	Yes
Firmware upgrade	Return to Citizen	Remotely updatable

Models Supported and recommended minimum firmware

Due to hardware changes to the optional interfaces, we strongly recommend upgrading the printer firmware to the minimum version below - especially for the PREMIUM boards - for correct operation. Old firmware may result in slow operation and some features being unavailable.

Printer	Firmware version
CL-S521II, CL-S621II	FC000200
CL-S531II, CL-S631II	FD000200
CL-S700DTII, CL-S700II, CL-S700RII	FE000200
CL-S703II, CL-S703RII	FF000200
CL-S521, CL-S621	DR000800
CL-S631	DS000800
CL-S700DT, CL-S700, CL-S700R	DA041600
CL-S703, CL-S703R	DD001200

New Premium cards

IF5-ES04

IF5-WF5x



	General Technical Specification
Processor	Armada 88F3710 A53 Core
RAM	256 Mb DDR3
Flash	32 Mb SPI
Ethernet	RJ45 connection 1000Base-T (Gigabit LAN) 100Base-TX 10Base-T
Wireless LAN option	USB 2.0 connection supporting Citizen WiFi upgrades
Wireless LAN Standards	IEEE802.11 a, b, g, n, ac.
Frequencies	2.4 GHz: (2.412 – 2.462, ch 1 to 14) 5.0 Ghz: (5.15 – 5.35 & 5.47 – 5.725)
Transmission Rates	802.11b: 11Mbps; 802.11g: 54Mbps 802.11n: 300Mbps; 802.11ac: 1,300Mbps
Security Protocols	WPA2-PSK (AES, TKIP), WPA-PSK (AES, TKIP), WEP (128/64 bit)

New Premium cards

Simplest way to Configure / Connect to WiFi

IF5-ES04 IF5-WF5x



Configure By LAN

Plug in LAN cable and start printer. Wait 30s then push test button to print LAN DHCP address
Enter IP to web browser, e.g. 192.168.20.3 (removing leading zeros)



Next to Citizen logo, top left, indication shows LAN connection only.

- Click on “Status”, “Wireless” link on left. Let local WiFi scan complete
- Choose Network by clicking the buttons 1,2,3
- Enter PSK / password details and Save.
- Remove LAN cable and restart printer
- Check for Wireless LAN connection
- The IP address, given by DHCP, will generally be the same as the LAN address as the MAC address doesn't change whether it is LAN or WiFi.

Connection Status	INACTIVE			
Current network name				
P2P address				
UUID	55ac92a7-282b-5ce2-9607-f57dbb86ca82			
Level / Noise	(0 / 0)			
Wi-Fi Protected Setup (WPS)	off			
Manufacturer	2357 / 011e			
Network List				
No.	Level	Network name (SSID)	Encryption	Mode [Channel/Freq]
1		SKYD1EFC	[WPA2-PSK-CCMP][WPS-AUTH][ESS]	Infrastructure[36/5180]
2		13HA	[WPA2-PSK-CCMP][ESS]	Infrastructure[44/5220]
3		13HA	[WPA-PSK-CCMP+TKIP][WPA2-PSK-CCMP+TKIP][WPS][ESS]	Infrastructure[36/5180]
4		13HA	[WPA2-PSK-CCMP][ESS]	Infrastructure[36/5180]
5		13HA	[WPA2-PSK-CCMP][ESS]	Infrastructure[1/2412]
6		13HA	[WPA2-PSK-CCMP][ESS]	Infrastructure[11/2462]